

ORIGINAL ARTICLE

Genetic Determinants of Electrocardiographic P-Wave Duration and Relation to Atrial Fibrillation

Lu-Chen Weng¹ ID, PhD*; Amelia Weber Hall² ID, PhD*; Seung Hoan Choi, PhD; Sean J. Jurgens³ ID, BSc; Jeffrey Haessler, MS; Nathan A. Bihlmeyer⁴ ID, PhD; Niels Grarup⁵ ID, MD, PhD; Honghuang Lin⁶ ID, PhD; Alexander Teumer⁷ ID, PhD; Ruifang Li-Gao⁸ ID, PhD; Jie Yao⁹ ID, MD, MS; Xiuqing Guo¹⁰ ID, PhD; Jennifer A. Brody¹¹ ID, BA; Martina Müller-Nurasyid¹² ID, PhD; Katharina Schramm, PhD; Niek Verweij, PhD; Marten E. van den Berg, MD, PhD; Jessica van Setten, PhD; Aaron Isaacs¹³ ID, PhD; Julia Ramírez¹⁴ ID, PhD; Helen R. Warren¹⁵ ID, PhD; Sandosh Padmanabhan¹⁶ ID, MD, PhD; Jan A. Kors, PhD; Rudolf A. de Boer¹⁷ ID, MD, PhD; Peter van der Meer¹⁸ ID, MD, PhD; Moritz F. Sinner, MD; Melanie Waldenberger¹⁹ ID, PhD; Bruce M. Psaty²⁰ ID, MD, PhD; Kent D. Taylor, PhD; Uwe Völker²¹ ID, PhD; Jørgen K. Kanter²² ID, MD; Man Li²³ ID, PhD; Alvaro Alonso²⁴ ID, MD, PhD; Marco V. Perez²⁵ ID, MD; Ilonca Vaartjes, PhD; Michiel L. Bots, MD, PhD; Paul L. Huang, MD, PhD; Susan R. Heckbert²⁶ ID, MD, PhD; Henry J. Lin, MD; Jelena Kornej²⁷ ID, MD, MSc; Patricia B. Munroe, PhD; Cornelia M. van Duijn²⁸ ID, PhD; Folkert W. Asselbergs²⁹ ID, MD, PhD; Bruno H. Stricker, MMed, PhD; Pim van der Harst³⁰ ID, MD, PhD; Stefan Kääh³¹ ID, MD; Annette Peters³² ID, PhD; Nona Sotoodehnia, MD, MPH; Jerome I. Rotter³³ ID, MD; Dennis O. Mook-Kanamori, MD, PhD; Marcus Dörr³⁴ ID, MD; Stephan B. Felix, MD; Allan Linneberg, MD, PhD; Torben Hansen, MD, PhD; Dan E. Arking³⁵ ID, PhD; Charles Kooperberg³⁶ ID, PhD; Emelia J. Benjamin³⁷ ID, MD, ScM; Kathryn L. Lunetta³⁸ ID, PhD; Patrick T. Ellinor³⁹ ID, MD, PhD; Steven A. Lubitz⁴⁰ ID, MD, MPH

BACKGROUND: The P-wave duration (PWD) is an electrocardiographic measurement that represents cardiac conduction in the atria. Shortened or prolonged PWD is associated with atrial fibrillation (AF). We used exome-chip data to examine the associations between common and rare variants with PWD.

METHODS: Fifteen studies comprising 64 440 individuals (56 943 European, 5681 African, 1186 Hispanic, 630 Asian) and ≈230 000 variants were used to examine associations with maximum PWD across the 12-lead ECG. Meta-analyses summarized association results for common variants; gene-based burden and sequence kernel association tests examined low-frequency variant-PWD associations. Additionally, we examined the associations between PWD loci and AF using previous AF genome-wide association studies.

RESULTS: We identified 21 common and low-frequency genetic loci (14 novel) associated with maximum PWD, including several AF loci (*TTN*, *CAND2*, *SCN10A*, *PITX2*, *CAV1*, *SYNPO2L*, *SOX5*, *TBX5*, *MYH6*, *RPL3L*). The top variants at known sarcomere genes (*TTN*, *MYH6*) were associated with longer PWD and increased AF risk. However, top variants at other loci (eg, *PITX2* and *SCN10A*) were associated with longer PWD but lower AF risk.

CONCLUSIONS: Our results highlight multiple novel genetic loci associated with PWD, and underscore the shared mechanisms of atrial conduction and AF. Prolonged PWD may be an endophenotype for several different genetic mechanisms of AF.

Key Words: atrial fibrillation ■ electrophysiology ■ exome ■ genetic ■ genome-wide association studies ■ population

Correspondence to: Steven A. Lubitz, Cardiac Arrhythmia Service & Cardiovascular Research Center, Massachusetts General Hospital, 55 Fruit St, GRB 109, Boston, MA, 02114. Email slubitz@mgh.harvard.edu

*Drs Weng and Hall contributed equally as first authors.

The Data Supplement is available at <https://www.ahajournals.org/doi/suppl/10.1161/CIRCGEN.119.002874>.

For Sources of Funding and Disclosures, see page 394.

© 2020 American Heart Association, Inc.

Circulation: Genomic and Precision Medicine is available at www.ahajournals.org/journal/circgen

Nonstandard Abbreviations and Acronyms

AF	atrial fibrillation
LV	left ventricle
MAF	minor allele frequency
PWD	P-wave duration
RAA	right atrial appendage

P-wave duration (PWD) is an electrocardiographic measurement that reflects cardiac conduction through the atria. PWD variability may implicate intrinsic or acquired properties in the function and structure of atrial conductivity.¹ Shortened and prolonged PWD have been repeatedly associated with atrial fibrillation (AF),^{2,3} a common and heritable⁴ arrhythmia that predisposes to stroke, heart failure, and increased mortality.⁵⁻⁷

Although PWD is heritable^{8,9} only 2 genome-wide association studies have been conducted.^{10,11} Given the relationship between PWD and AF, examining the genetic

determinants of PWD may provide insights into the pathophysiology of AF. Moreover, assessment of coding variation may facilitate identification of AF-specific genes. Therefore, we conducted an exome-chip based analysis focused on rare and common genetic determinants of PWD.

METHODS

Each study was reviewed and approved by the local or institutional IRB, and each participant provided consent. Study-specific details are provided in [Data Supplement](#), under Description of participating studies and in Table I in the [Data Supplement](#). In our primary analysis, we considered loci/genes significantly associated with PWD if a common variant (minor allele frequency [MAF] $\geq 5\%$) or a gene-based test, including burden or sequence kernel association test¹² comprising low-frequency variants (MAF $< 5\%$ or MAF $< 1\%$) exceeded exome-wide significance in meta-analyses, after Bonferroni correction. We reported low-frequency variants that exceeded exome-wide significance at significant loci identified in gene-based analyses. The full Methods section is available in the [Data Supplement](#) (under Methods). Data supporting the findings of this study can be made available, following reasonable request to the corresponding author.

Table 1. Study Participant Characteristics*

Study	Ancestry	N	Age, y, Mean \pm SD	Sex, Women, %	P-Wave Duration, ms, Mean \pm SD	RR Interval, ms, Mean \pm SD
ARIC	European	8861	53.9 \pm 5.7	54.1	106.0 \pm 11.8	920.5 \pm 133.8
	African	2922	53.3 \pm 5.8	62.2	111.5 \pm 11.9	924.2 \pm 148.6
BRIGHT	European	195	60.5 \pm 8.9	57.4	121.1 \pm 19.4	976.1 \pm 186.0
CAMP	European	1887	59.9 \pm 10.4	37.4	106.0 \pm 15.8	936.8 \pm 171.3
CHS	European	2648	72.3 \pm 5.4	60.7	109.9 \pm 13.0	950.0 \pm 145.8
	African	445	72.6 \pm 5.6	64.5	112.2 \pm 13.1	912.8 \pm 156.4
ERF	European	514	49.0 \pm 14.3	54.1	111.2 \pm 12.4	963.4 \pm 152.9
FHS	European	5677	47.2 \pm 13.3	55.0	105.0 \pm 12.0	973.7 \pm 155.9
INTER99	European	5872	46.2 \pm 7.9	51.6	104.3 \pm 12.5	920.4 \pm 150.5
KORA	European	2435	47.1 \pm 12.8	51.9	108.0 \pm 11.1	939.7 \pm 147.7
LIFELINES	European	1914	45.2 \pm 13.0	59.8	112.1 \pm 12.4	897.3 \pm 144.5
UHP	European	1657	38.5 \pm 12.5	55.8	109.1 \pm 14.6	956.5 \pm 152.4
MESA	European	2083	61.8 \pm 10.1	51.8	104.4 \pm 12.9	1054.5 \pm 158.9
	African	1131	61.3 \pm 10.3	52.9	107.9 \pm 12.3	1054.4 \pm 170.2
	Hispanic	1186	60.6 \pm 10.3	50.1	105.2 \pm 12.0	1061.0 \pm 154.5
	Asian	630	61.3 \pm 10.3	50.2	101.7 \pm 11.7	1059.0 \pm 140.3
NEO	European	5119	55.6 \pm 6.0	51.9	114.2 \pm 13.9	933.8 \pm 150.5
RS	European	1740	69.5 \pm 8.4	51.4	120.1 \pm 12.4	859.8 \pm 140.6
SHIP-0	European	2653	46.5 \pm 15.4	51.8	109.5 \pm 11.2	853.6 \pm 147.8
SHIP-Trend	European	2922	47.9 \pm 14.6	52.5	113.1 \pm 11.9	911.3 \pm 134.5
WHI	European	10766	65.8 \pm 6.6	100	107.2 \pm 11.9	914.3 \pm 134.2
	African	1183	64.3 \pm 6.5	100	110.6 \pm 11.5	920.2 \pm 143.7

ARIC indicates Atherosclerosis Risk in Communities study; BRIGHT, British Genetics of Hypertension; CAMP, MGH Cardiology and Metabolic Patient cohort; CHS, Cardiovascular Health Study; ERF, Erasmus Rucphen Family; FHS, Framingham Heart Study; INTER99, <https://clinicaltrials.gov/ct2/show/NCT00289237>; KORA, Kooperative Gesundheitsforschung in der Region Augsburg; LIFELINES, Lifelines Cohort Study; MESA, Multi-Ethnic Study of Atherosclerosis; NEO, Netherlands Epidemiology of Obesity study; RS, Rotterdam Study; SHIP, Study of Health in Pomerania; UHP, the Utrecht Health Project; and WHI, the Women's Health Initiative.

*N: sample size.

RESULTS

A total of 64440 individuals from 4 ethnic groups (56943 European, 5681 African, 630 Asian, 1186 Hispanic), and 15 studies were included in our meta-analysis. The per-study mean age ranged from 46.2 to 72.6 years; roughly 60% of participants were women (Table 1). For the multiethnic single variant analyses, we tested ≈ 26000 common variants (see Table III in the [Data Supplement](#) for the exact number of variants included in each analysis). The Quantile-Quantile plots show a small degree of inflation for both PWD residuals ($\lambda=1.10$) and inverse normal transformed PWD residuals ($\lambda=1.13$; Figure IA and IB in the [Data Supplement](#)). We performed meta-analyses in ethnicity-specific groups (European: $\lambda=1.10-1.13$; African: $\lambda=1.03$; Figure IC through IF in the [Data Supplement](#)). Linkage disequilibrium score regression intercepts were 1 (multiethnic analyses) and 0.95 (European-specific analyses), suggesting the inflation was mainly due to polygenicity.

Meta-analysis results from PWD residuals and inverse normal transformed PWD residuals were highly correlated across analyses (Pearson $\rho \geq 0.99$, $R < 2.2 \times 10^{-16}$; Figure II in the [Data Supplement](#)).

COMMON VARIANT ANALYSES

We identified 41 exome-wide significant variants at 18 loci ($P < 1.9 \times 10^{-6}$; Figure III in the [Data Supplement](#)) in our multiethnic meta-analysis of PWD residuals (Table 2). Eleven of the 18 PWD loci are novel, representing the following nearest genes: *PKP1* (rs1626370, $P=2 \times 10^{-6}$), *TTN*† (rs2042995, $P=4 \times 10^{-7}$), *PITX2* (rs17042171, $P=8 \times 10^{-11}$), *ARHGAP10* (rs6845865, $P=2 \times 10^{-10}$), *TCF21* (rs2327429, $P=2 \times 10^{-7}$), *CDK6* (rs2282978, $P=2 \times 10^{-8}$), *SYNPO2L* (rs3812629, $P=4 \times 10^{-7}$), *SOX5* (rs17287293, $P=3 \times 10^{-7}$), *HMGA2* (rs8756, $P=7 \times 10^{-7}$), *GORS4* (rs17608766, $P=9 \times 10^{-15}$), and *MC4R* (rs12970134, $P=1 \times 10^{-6}$). Another novel locus was associated only with the inverse normal transformed PWD

Table 2. Top Exome-Wide Significant Variants for P-Wave Duration In Multiethnic Meta-Analysis

Locus	Closest Gene	Location	rsID	EA	Function	N	EAF	Residuals					Inverse Normal Transformed Residuals				
								Beta	SE	P Value	h ² , %	I ² , %	Beta	SE	P Value	h ² , %	I ² , %
Novel loci																	
1	<i>PKP1</i>	1q32.1	rs1626370	A	Missense	64431	0.2	0.39	0.08	2×10^{-6} *	0.04	2	0.03	0.01	2×10^{-6} *	0.04	0
2	<i>TTN</i> †	2q31.2	rs2042995	C	Intron	64410	0.3	0.41	0.08	4×10^{-7} *	0.04	8	0.03	0.01	5×10^{-7} *	0.04	12
3	<i>DLEC1</i> ‡	3p22.2	rs116202356	G	Missense	64331	0.98	1.72	0.27	2×10^{-10} *	0.06	20	0.14	0.02	2×10^{-10} *	0.06	19
4	<i>PITX2</i>	4q25	rs17042171	C	Intergenic	64399	0.9	0.64	0.10	8×10^{-11} *	0.07	45	0.06	0.01	2×10^{-11} *	0.07	50
5	<i>ARHGAP10</i>	4q31.23	rs6845865	C	Intron	64437	0.2	0.54	0.09	2×10^{-10} *	0.06	0	0.05	0.01	9×10^{-11} *	0.07	0
6	<i>TCF21</i> / <i>TARID</i>	6q23.2	rs2327429	C	Upstream	64434	0.3	0.39	0.07	2×10^{-7} *	0.04	13	0.03	0.01	1×10^{-7} *	0.04	9
7	<i>JAZF1</i>	7p15.1	rs864745	C	Intron	64388	0.5	0.32	0.07	2×10^{-6}	0.04	0	0.03	0.01	1×10^{-6} *	0.04	0
8	<i>CDK6</i>	7q21.2	rs2282978	C	Intron	64424	0.4	0.39	0.07	2×10^{-8} *	0.05	0	0.03	0.01	5×10^{-8} *	0.05	6
9	<i>SYNPO2L</i>	10q22.2	rs3812629	A	Missense	64423	0.2	0.47	0.09	4×10^{-7} *	0.04	0	0.04	0.01	7×10^{-7} *	0.04	0
10	<i>SOX5</i>	12p12.1	rs17287293	A	Intergenic	64429	0.9	0.49	0.10	3×10^{-7} *	0.04	0	0.04	0.01	3×10^{-7} *	0.04	0
11	<i>HMGA2</i>	12q14.3	rs8756	C	3'-UTR	64418	0.5	0.33	0.07	7×10^{-7} *	0.04	0	0.03	0.01	5×10^{-7} *	0.04	0
12	<i>RPL3L</i> ‡	16p13.3	rs113956264	C	Missense	64403	0.97	0.99	0.20	1×10^{-6} *	0.04	0	0.08	0.02	4×10^{-6}	0.03	10
13	<i>GOSR2</i>	17q21.32	rs17608766	C	Intron	64435	0.1	0.80	0.10	9×10^{-15} *	0.09	0	0.07	0.01	1×10^{-15} *	0.10	0
14	<i>MC4R</i>	18q21.32	rs12970134	A	Intergenic	64430	0.3	0.38	0.08	1×10^{-6} *	0.04	0	0.03	0.01	7×10^{-6}	0.03	0
Previously reported loci																	
15	<i>CAND2</i>	3p25.2	rs11718898	T	Missense	52472	0.3	0.39	0.08	9×10^{-7} *	0.05	0	0.03	0.01	8×10^{-7}	0.05	0
	<i>CAND2</i>	3p25.2	rs3732675	T	Missense	64395	0.4	0.34	0.07	1×10^{-6}	0.04	0	0.03	0.01	3×10^{-7} *	0.04	0
16	<i>SCN10A</i>	3p22.2	rs6800541	C	Intron	64423	0.4	1.18	0.07	4×10^{-93} *	0.44	51	0.10	0.01	2×10^{-65} *	0.45	45
17	<i>HCN1</i>	5p12	rs6892594	T	Intron	64427	0.4	0.43	0.07	2×10^{-10} *	0.06	0	0.04	0.01	3×10^{-10} *	0.06	0
18	<i>CAV1</i>	7q31.2	rs3807989	A	Intron	64430	0.4	0.47	0.07	2×10^{-12} *	0.08	0	0.04	0.01	8×10^{-13} *	0.08	0
19	<i>FADS1</i>	11q12.2	rs174546	C	3'-UTR	64430	0.7	0.50	0.07	2×10^{-11} *	0.07	9	0.04	0.01	6×10^{-12} *	0.07	9
20	<i>TBX5</i>	12q24.21	rs883079	C	3'-UTR	64435	0.3	0.80	0.07	9×10^{-28} *	0.19	17	0.07	0.01	6×10^{-29} *	0.19	11
21	<i>MYH6</i>	14q11.2	rs452036	A	Intron	64422	0.4	0.68	0.07	8×10^{-23} *	0.15	0	0.06	0.01	1×10^{-23} *	0.16	0

Beta indicates the changes of (inverse normal transformed) P-wave duration residuals per 1 effect allele increment; EA, effect allele; EAF, effect allele frequency; h², SNP heritability estimate; N, sample size; and UTR, untranslated region.

*P values at exome-wide significance.

†Locus with minor allele frequency <5% is also identified from gene-based analysis.

‡Locus with minor allele frequency <5% identified from gene-based analysis.

(*JAZF1*, $P=1\times 10^{-6}$; Table 2; Table IV in the [Data Supplement](#)). The PWD variance explained by each of the top variants ranged from 0.04% to 0.44%; the top variants in aggregate explained $\approx 1.6\%$ of the phenotypic variance. Associations for *SCN10A* and *PITX2* regions were moderately heterogeneous across individual studies ($P \geq 45\%$; Table 2). Of these 19 multiethnic significantly associated loci, 13 were significantly associated with PWD residuals in the European ancestry subset, and one (*SCN10A*) was observed in individuals of African ancestry (Table IV in the [Data Supplement](#)). No additional loci were observed in analyses restricted to either European or African ancestry (Figure IV in the [Data Supplement](#) for Manhattan plots).

In conditional analyses, we identified additional signals from *SCN5A* and *SCN10A* (Table V in the [Data Supplement](#)). For inverse normal transformed PWD residuals, an additional signal (rs10033464, $P=2\times 10^{-7}$) was observed in the *PITX2* region. In addition to the 7 previously known loci that exceeded exome-wide significance, we observed 2 nominally significant associations with PWD at *SSBP3* and *EPAS1* ($P<0.001$; Table VI in the [Data Supplement](#)).¹⁰

GENE-BASED ANALYSES

We performed burden and sequence kernel association tests for associations with PWD for 16949 genes with a cumulative minor allele count ≥ 10 , including 192455 low-frequency and rare variants, in the multiethnic sample. We identified 4 genes associated with PWD using sequence kernel association tests aggregating functional variants with MAF $< 5\%$ (*TTN*, $P=6\times 10^{-27}$; *DLEC1*, $P=2\times 10^{-13}$; *SCN10A*, $P=7\times 10^{-8}$; and *RPL3L*, $P=9\times 10^{-7}$; Table 3). We identified an additional association (*TTC21A*, $P=1\times 10^{-6}$) using inverse normal transformed PWD residuals in the

European-specific analysis. Using burden tests, we identified *TTN* and *MUC5B* as PWD-associated genes in the multiethnic and European-specific analyses. We did not observe any significant associations for variants with MAF $< 1\%$, suggesting that identified associations were mainly driven by low-frequency, not rare, variants. Among these significant genes, we identified 2 additional low-frequency missense variants exceeding exome-wide significance for association (*DLEC1*, rs116202356, Glu264Lys, $P=2\times 10^{-10}$; *RPL3L*, rs113956264, Val262Met, $P=1\times 10^{-6}$; Table 2), which were not reported in our single variant tests.

EXPRESSION QUANTITATIVE TRAIT LOCUS ANALYSES BETWEEN GENES AT PWD LOCI AND GENE EXPRESSION

We assessed expression quantitative trait locus associations for top variants and proxies (linkage disequilibrium: $r^2>0.8$; 1000 Genomes: phase 3 version 5, all individuals from LDlink¹³) in 2 heart tissues from GTEx version 7 (right atrial appendage [RAA] and left ventricle [LV]; Table VII in the [Data Supplement](#)).¹⁴ Six loci were associated with significant changes in gene expression, especially in the RAA, including 2 known PWD loci (*HCN1*, *FADS1*) and 4 novel loci (*TTN*, *TCF21*, *JAZF1*, *SYNPO2L*; Table VII in the [Data Supplement](#)). The alleles associated with longer PWD at *HCN1* and *SYNPO2L* had lower expression of these genes in RAA tissues. In contrast, alleles at the *JAZF1* and *FADS1* loci were associated with higher gene expression in the RAA and LV, respectively. Gene expression directionality was consistent across RAA and LV tissues. Expression level changes of *JAZF1* and *MYOZ1* per allele in RAA tissue were significantly higher than in the LV. We observed more significant

Table 3. Top Gene in Low-Frequency Variant Gene-Based Analyses of P-Wave Duration Stratified by Ancestral Group

Gene	Multiethnic				European				African			
	Var No.	cMAC	Residuals	Inverse Normal Transformed Residuals	Var No.	cMAC	Residuals	Inverse Normal Transformed Residuals	Var No.	cMAC	Residuals	Inverse Normal Transformed Residuals
			P Value	P Value			P Value	P Value			P Value	P Value
SKAT												
<i>TTN</i>	775	276986	$5\times 10^{-27*}$	$5\times 10^{-26*}$	704	215801	$5\times 10^{-27*}$	$1\times 10^{-26*}$	536	23041	0.59	0.71
<i>DLEC1</i>	57	10419	$2\times 10^{-13*}$	$2\times 10^{-13*}$	55	6937	$2\times 10^{-12*}$	$3\times 10^{-12*}$	39	2568	0.70	0.73
<i>TTC21A</i>	37	12207	1×10^{-5}	5×10^{-6}	32	10900	4×10^{-6}	$1\times 10^{-6*}$	28	1250	0.98	0.98
<i>SCN10A</i>	61	16550	$7\times 10^{-8*}$	$9\times 10^{-9*}$	47	12804	$2\times 10^{-7*}$	$4\times 10^{-8*}$	34	524	0.84	0.81
<i>RPL3L</i>	26	8510	$1\times 10^{-6*}$	4×10^{-6}	25	6742	$2\times 10^{-6*}$	1×10^{-5}	18	265	0.33	0.21
Burden												
<i>TTN</i>	775	276986	$1\times 10^{-14*}$	$8\times 10^{-14*}$	704	215801	$1\times 10^{-20*}$	$4\times 10^{-18*}$	536	23041	0.26	0.27
<i>MUC5B</i>	68	36414	$7\times 10^{-6*}$	1×10^{-5}	63	25110	$3\times 10^{-6*}$	6×10^{-6}	58	2846	0.59	0.56

cMAC indicates cumulative minor allele count; SKAT, sequence kernel association test; and Var no., number of variants included in the gene set.

*P values that exceed the exome-wide significance threshold ($P<3.0\times 10^{-6}$, 3.1×10^{-6} , and 3.5×10^{-6} for individuals of multiethnic, European, and African ancestries, respectively).

expressions quantitative trait locus in the RAA than the LV, as expected, because PWD reflects atrial conduction.

RELATION OF THE PWD WITH ECG TRAITS IDENTIFIES 4 NOVEL AND 5 KNOWN LOCI

We examined associations between PWD loci and other ECG measurements from large-scale association studies (Table VIII in the [Data Supplement](#)). We identified 8 novel (*TTN*, *DLEC1*, *ARHGAP10*, *JAZF1*, *SYNPO2L*, *SOX5*, *HMGGA2*, *GOSR2*) and 5 known (*SCN10A*, *CAV1*, *FADS1*, *TBX5*, *MYH6*) PWD loci, all previously reported to be associated with PR interval, PR segment, QRS duration, QT interval, or RR interval. Variants at *TCF21*, *SYNPO2L*, and *MYH6* were associated with PR interval in recent large-scale genetic association studies,^{15–17} but the top variants in our PWD analysis were in low to moderate linkage disequilibrium with top variants from these earlier analyses (linkage disequilibrium, $r^2 < 0.8$; 1000 Genomes: phase 3 version 5, all individuals).

OVERLAP BETWEEN PWD LOCI AND AF

Fourteen PWD loci were associated with AF risk in a recent AF genome-wide association studies¹⁸ ($P < 0.0024 = 0.05/21$ loci; Figure 1 and Table VIII in the [Data Supplement](#)). Two loci in well-known AF gene regions, *PITX2* and *TTN*, were novel PWD loci. Among these 14 loci, 6 were associated with longer PWD and higher AF risk (*TTN*, *TCF21*, *SOX5*, *GOSR2*, *MC4R*, *MYH6*), whereas 8 were associated with longer PWD but lower AF risk (*DLEC1*, *PITX2*, *CDK6*, *SYNPO2L*, *CAND2*, *SCN10A*, *CAV1*, *TBX5*).

DISCUSSION

In a multiethnic study comprising $\approx 65,000$ individuals, we identified 12 novel and 7 previously reported loci related to PWD in a meta-analysis of common exome-chip variants. After aggregating rare and low-frequency exonic variants, we identified 6 genes, including 2 additional low-frequency variants potentially related to PWD, and loci with specific patterns of association for PWD and AF risk. These findings suggest that AF may result from multiple genetic mechanisms, and PWD may be an endophenotype for these mechanisms.

Our study extends the literature on the genetic components underlying atrial conduction, and the relationship between PWD and AF risk. In comparison to earlier genetic association studies of PWD,^{10,11} we predominantly focused on genetic variants in coding regions (Table 2). In total, we identified 21 common variant loci related to PWD. The top common variants explain $\approx 1.6\%$ of the phenotypic variance in PWD. Our gene-based

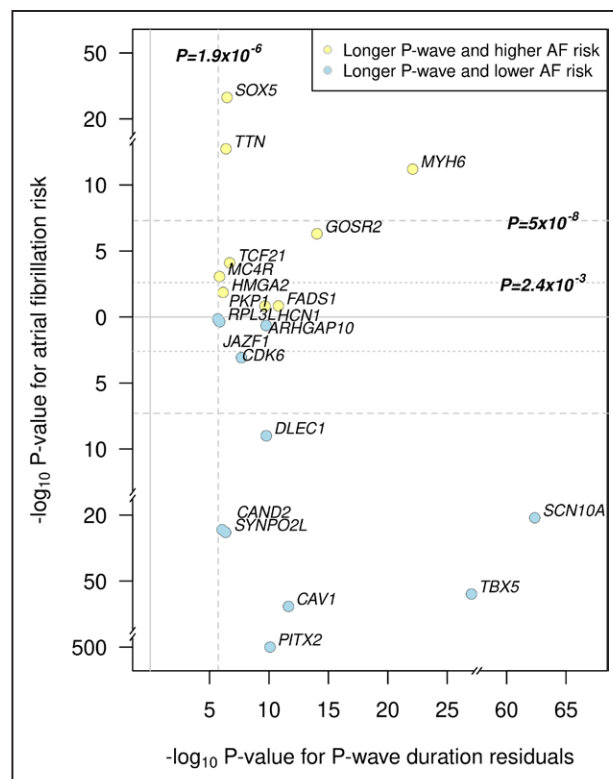


Figure 1. P-wave duration (PWD) loci and atrial fibrillation (AF) risk.

The x axis represents the association between the top PWD loci and PWD in $-\log_{10}$ scale. The y axis represents the association P value between the top PWD loci and AF risk ($-\log_{10}$ scale). Variants above $y=0$ refer to loci associated with longer PWD and higher AF risk (colored in yellow). Variants below $y=0$ refer to loci associated with longer PWD but lower AF risk (colored in blue). Displayed results are from the multiethnic meta-analysis of PWD residuals. Associations with AF were derived from a recent AF genome-wide association studies.¹⁸ Dashed lines show the significance threshold for the current exome-wide analysis (vertical; $P < 1.9 \times 10^{-6}$) and for prior genome-wide analyses of AF (horizontal; $P < 5 \times 10^{-8}$). The dotted line represents the significance cutoff after Bonferroni correction (horizontal; $P < 2.4 \times 10^{-3} = 0.05/21$ PWD loci).

analyses also highlight the importance of low-frequency variants contributing to PWD in genes, such as *TTN*, *SCN10A*, and *RPL3L*.

Our findings have 2 major implications. First, associated loci span genes involved in the development and maintenance of adult cardiac tissue (*PITX2*, *TCF21*, *HMGGA2*, *NKX2-5*, *TBX5*, *CAND2*, *CDK6*), muscle and sarcomere structure (*TTN*, *SYNPO2L*, *SOX5*, *MYH6*, *RPL3L*), ion channel function (*HCN1*, *SCN10A*), and cell-cell contact (*PKP1*, *ARHGAP10*, *CAV1*). We additionally noted several genes with a role in metabolism (*JAZF1*, *CDK6*, *HMGGA2*, *MC4R*) though the connection to AF is less clear.^{19–22} The transcription factor *PITX2* is the top susceptibility locus for AF. Decreased *Pitx2* expression in the adult left atrium is associated with AF in humans,²³ and abnormal cardiac conduction, and low-voltage P-waves in knockout mice.²⁴ *PITX2* is activated

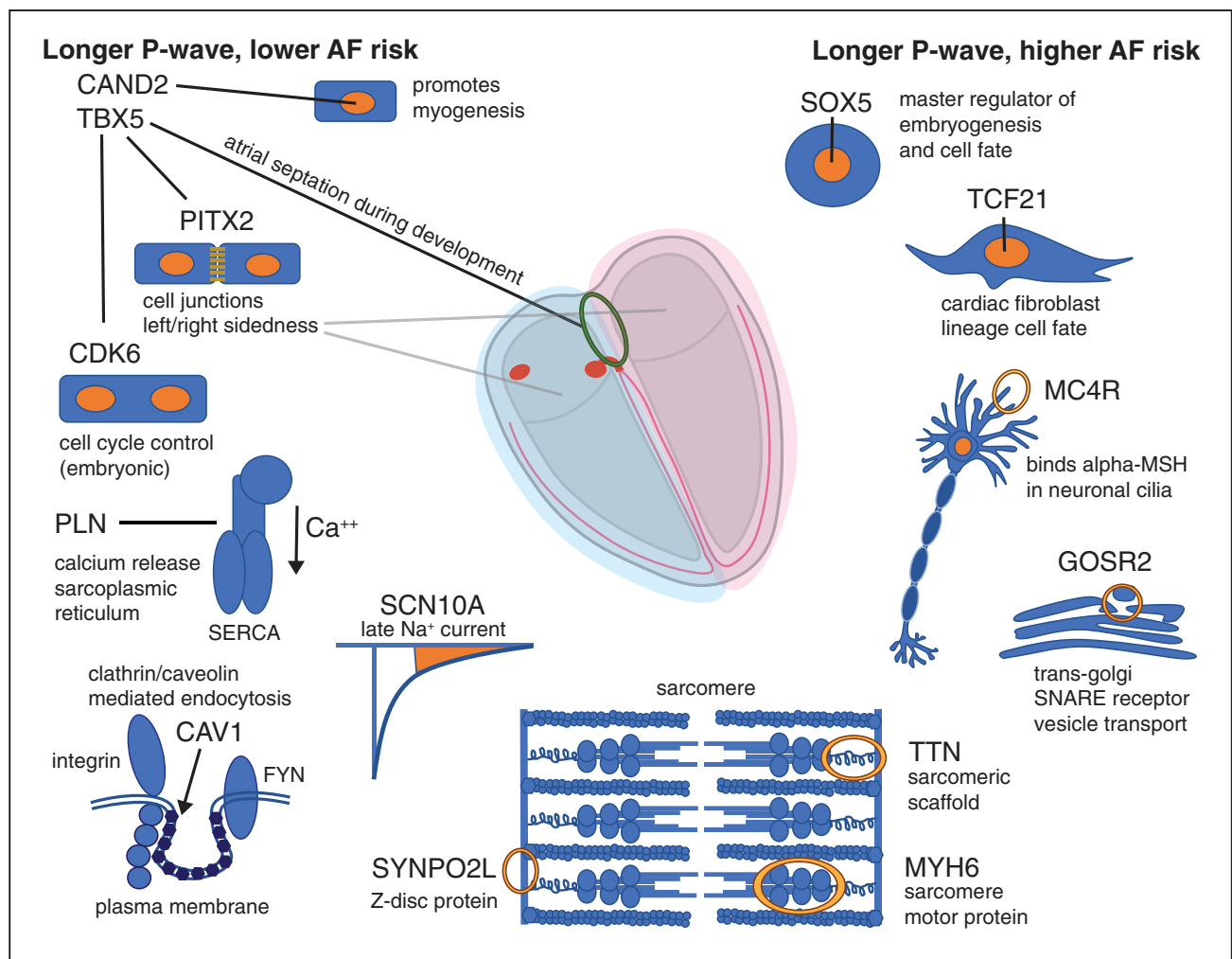


Figure 2. Identified P-wave duration (PWD) associated genes highlight multiple biological pathways for atrial fibrillation (AF) risk.

Genes with increasing risk of AF coupled with prolonged PWD are listed at the **right**. Genes with decreasing risk of AF coupled with prolonged PWD are listed at the **left**. Each gene is accompanied by a diagram representing the biological function of the gene, indicating how the gene may affect PWD.

by *TBX5* to coregulate many membrane effector genes (such as *SCN5A*, *GJA5*, and *RYR2*). Reduction of *Tbx5* expression in a mouse model decreased myocardial automaticity.²⁵ *TCF21* is a transcription factor required during embryogenesis for formation of heart tissue and is involved in fibroblast generation after injury in adults.²⁶ The nuclear scaffolding protein *HMG2* trans-activates the heart-specific transcription factor *NKX2-5*.²⁷ *HMG2* overexpression in mice mediates the response to pressure-overload induced cardiac remodeling.²⁸ *CAND2* suppresses myogenin degradation and directs cardiac progenitor cells towards a myocyte fate.²⁹

Titin (*TTN*) is a major structural component of the sarcomere, required for contractile function in cardiomyocytes. Loss of function mutations in *TTN* are associated with early-onset AF³⁰ and dilated cardiomyopathy.³¹ Cytoskeletal heart-enriched actin-associated protein; aka *SYNPO2L* is a Z-disc protein; zebrafish knockdown models display hypertrophy and delayed conduction,³² and

the locus has been associated with AF in genome-wide association studies.¹⁸ *SOX5* is a master regulator of cell fate in embryonic development.³³ In drosophila, *SOX5* knockdown results in decreased heart rate and increased cardiac wall thickness.³⁴ *MYH6*, specifically expressed in the atria, forms the thick filament in cardiac smooth muscle; mutations are associated with cardiomyopathies,³⁵ sinus node dysfunction,³⁶ and congenital heart disease.³⁷ Some identified genes are important for atrial conduction, including *HCN1*³⁸ and *SCN10A*³⁹ which govern potassium, and late sodium channel currents, respectively. The proteins *ARHGAP10*,⁴⁰ *PKP1*,⁴¹ and *CAV1*,⁴² are involved in cell-cell contact and are necessary for efficient signal conduction. The ribosomal protein RPL3L is specifically expressed in skeletal muscle and heart; coding variants in this gene are associated with AF.⁴³

Second, our study implicates PWD as a powerful endophenotype for understanding the biological mechanisms of AF. Fifteen loci identified in our study were associated

with AF risk in a recent AF genome-wide association studies,¹⁸ underscoring the genetic correlation between atrial conduction and AF risk. Epidemiological data indicate that PWD variability is associated with AF risk,^{2,3} AF recurrence after cardioversion,⁴⁴ and ablation,⁴⁵ as well as ischemic stroke.⁴⁶ Generally, we observed that top variants at known sarcomere genes (eg, *TTN*, *MYH6*) were associated with increased PWD and increased AF risk, implicating atrial myopathic pathways in AF susceptibility. We speculate that myopathic pathways predispose individuals to AF via delayed conduction velocity, increased propensity for reentry, and susceptibility to ectopic atrial activity. Similarly, *TCF21* and *SOX5* are 2 transcription factors associated with increased PWD and increased AF risk.

In contrast, top variants at *SCN10A* were associated with increased PWD but reduced AF risk. Other PWD-associated genes, such as *PITX2*, *CAND2*, *TBX5*, and *CDK6*, contained variants associated with longer PWD and reduced AF risk. The directionality of gene associations observed for PWD and AF risk underscore the complexity of AF susceptibility while highlighting the potential to leverage PWD to elucidate AF-specific pathways (Figure 2). Whether studying PWD can lead to insights relevant to therapeutic targeting remains unclear.

Our results should be interpreted within the context of our study design. First, the majority of our sample consisted of individuals of European ancestry and may have limited generalizability to non-European ancestries. Studies with broader ethnic/racial diversity are warranted. Second, top variants identified in our study may not directly modulate PWD, a limitation of most genetic association studies. Biological characterization of loci is needed to conclusively link variants to function. Third, ascertainment of rare variation is limited using the exome-chip, and future analyses of sequence data are warranted. Fourth, despite a relatively large sample, our findings explained a small proportion of phenotypic variance. Because the additive SNP-based heritability of PWD has been estimated to be as high as 19%,³ our results highlight the fact that much of the genetic susceptibility to PWD remains unexplained. Larger samples, genome-wide assessments, and examination of rare variation may be necessary to identify additional loci for PWD.

In conclusion, we identified 14 novel loci in common and low-frequency variant analyses and 6 gene regions in a low-frequency variant analysis for PWD. Our findings highlight the shared genetic components of atrial conduction and AF risk and illustrate the diverse biological pathways affecting atrial conduction and mechanisms leading to AF.

ARTICLE INFORMATION

Received December 5, 2019; accepted July 27, 2020.

Affiliations

Cardiovascular Research Center (L.-C.W., A.W.H., P.L.H., P.T.E.) and Cardiac Arrhythmia Service (P.T.E., S.A.L.), MGH, Boston. Cardiovascular Disease Initia-

tive, The Broad Institute of MIT and Harvard, Cambridge, MA (L.-C.W., A.W.H., S.H.C., S.J.J., P.T.E., S.A.L.). Fred Hutchinson Cancer Research Center, Division of Public Health Sciences, Seattle, WA (J.H., C.K.). McKusick-Nathans Department of Genetic Medicine, Johns Hopkins University School of Medicine, Baltimore, MD (N.A.B., D.E.A.). Novo Nordisk Foundation Center for Basic Metabolic Research (N.G., T.H.), Lab of Experimental Cardiology (J.K.K.), and Department of Clinical Medicine (A.L.), Faculty of Health & Medicine Sciences, University of Copenhagen, Denmark. Boston University & NHLBI's Framingham Heart Study, Framingham, MA (H.L., J.K., E.J.B., K.L.L.). Section of Computational Biomedicine, Department of Medicine (H.L.) and Department of Medicine (E.J.B.), Boston University School of Medicine, Boston, MA. DZHK (German Center for Cardiovascular Research), partner site Greifswald, Germany (A.T., U.V., M.D., S.B.F.). Institute for Community Medicine (A.T.), Interfaculty Institute for Genetics & Functional Genomics (U.V.), and Department of Internal Medicine B (M.D., S.B.F.), University Medicine Greifswald, Germany. Department of Clinical Epidemiology (R.L.-G., D.O.M.-K.) and Department of Public Health & Primary Care (D.O.M.-K.), Leiden University Medical Center, the Netherlands. The Institute for Translational Genomics & Population Sciences at Harbor-UCLA Medical Center, Torrance, CA (J.Y., X.G., K.D.T., H.J.L., J.I.R.). Department of Pediatrics (X.G., K.D.T., H.J.L.) and Departments of Pediatrics & Human Genetics (J.I.R.), David Geffen School of Medicine at UCLA, Los Angeles, CA. Chair of Genetic Epidemiology, IBE, Faculty of Medicine, LMU Munich, Germany (M.M.-N., K.S.). Department of Internal Medicine I (Cardiology), Hospital of the Ludwig-Maximilians-University (LMU) Munich, Germany (M.M.-N., K.S., M.F.S., S.K.). Institute of Genetic Epidemiology, Helmholtz Zentrum München - German Research Center for Environmental Health, Neuherberg, Germany (M.M.-N., K.S.). Genomics plc, Oxford, United Kingdom (N.V.). Department of Cardiology (N.V., R.A.d.B., P.v.d.M., P.v.d.H.) and Department of Genetics (P.v.d.H.), University of Groningen & University Medical Center. Department of Epidemiology (M.E.v.d.B.), Department of Internal Medicine (B.H.S.) and Department of Medicine Informatics (B.H.S.), Erasmus MC, Medical Center Rotterdam, Division of Heart & Lungs, Department of Cardiology, University of Utrecht, University Medical Center Utrecht (J.v.S., F.W.A.). CARIM School for Cardiovascular Diseases (A.I.) and Department of Physiology (A.I.), Maastricht University, the Netherlands. National Institute for Health Research, Barts Cardiovascular Biomedical Research Center (J.R., H.R.W., P.B.M.) and William Harvey Research Institute, Barts & The London School of Medicine & Dentistry (J.R., H.R.W., P.B.M.), Queen Mary University of London, London. Institute of Cardiovascular & Medical Sciences, College of Medical, Veterinary & Life Sciences, University of Glasgow, United Kingdom (S.P.). Department of Medicine Informatics (J.A.K.) and Department of Epidemiology (C.M.v.D.), Erasmus University Medical Center, Rotterdam, the Netherlands. DZHK (German Center for Cardiovascular Research), partner site Munich Heart Alliance (M.F.S., M.W., S.K., A.P.). Institute of Epidemiology (M.W., A.P.) and Research Unit of Molecular Epidemiology (M.W.), Helmholtz Zentrum München - German Research Center for Environmental Health, Neuherberg, Germany. Cardiovascular Health Research Unit, Department of Medicine (J.A.B., N.S.), Cardiovascular Health Research Unit, Departments of Medicine, Epidemiology & Health Services (B.M.P.) and Cardiovascular Health Research Unit, Department of Epidemiology (S.R.H.), University of Washington. Kaiser Permanente Washington Health Research Institute, Seattle, WA (B.M.P.). Division of Nephrology & Hypertension, Department of Internal Medicine, University of Utah School of Medicine, Salt Lake City, UT (M.L.). Department of Epidemiology, Rollins School of Public Health, Emory University, Atlanta, GA (A.A.). Department of Medicine, Stanford University, Palo Alto, CA (M.V.P.). Julius Center for Health Sciences & Primary Care, University Medical Center Utrecht, Utrecht University, the Netherlands (I.V., M.L.B.). Nuffield Department of Population Health, Medical Sciences Division, St. Cross College, Oxford University (C.M.v.D.). Health Data Research UK & Institute of Health Informatics (F.W.A.) and Institute of Cardiovascular Science, Faculty of Population Health Sciences (F.W.A.), University College London, United Kingdom. Inspectorate of Health Care (B.H.S.) and Durrer Center for Cardiogenetic Research (P.v.d.H.), ICIN-Netherlands Heart Institute, Utrecht. German Center for Diabetes Research, Neuherberg, Germany (A.P.). Center for Clinical Research & Prevention, Bispebjerg & Frederiksberg Hospital, Copenhagen, Denmark (A.L.). Department of Epidemiology (E.J.B.) and Department of Biostatistics (K.L.L.), Boston University School of Public Health, Boston, MA.

Acknowledgments

Complete acknowledgments by study are available in the [Data Supplement](#). The Genotype-Tissue Expression (GTEx) Project was supported by the Common Fund of the Office of the Director of the National Institutes of Health, and by National Cancer Institute, National Human Genome Research Institute, National Heart, Lung, and Blood Institute, National Institute on Drug Abuse, National Institute of Mental Health, and National Institute of Neurological Disorders and Stroke. The data used for the analyses described in this article were obtained from the GTEx Portal on October 05, 2018 and January 25, 2020.

Sources of Funding

Dr Weng is supported by an American Heart Association (AHA) Postdoctoral Fellowship Award (17POST33660226). This work was supported by an AHA Strategically Focused Research Networks (SFRN) postdoctoral fellowship to Drs. Weng and Hall (18SFRN34110082). Funded in part by training grant (National Institute of General Medical Sciences) 5T32GM07814 (Dr Bihlmeyer) and R01HL116747 (Drs Arking and Bihlmeyer), and R01 HL111089 (Dr Arking). This material is based on work supported by the National Science Foundation Graduate Research Fellowship under Grant No. DGE-1232825 (Dr Bihlmeyer). Any opinion, findings, and conclusions or recommendations expressed in this material are those of the authors(s) and do not necessarily reflect the views of the National Science Foundation. Additional support was provided by AHA grant 16EIA26410001 (Dr Alonso) and National, Heart, Lung and Blood Institute grant K24HL148521 (Dr Alonso). Dr Ramirez was supported by Medical Research Council grant MR/N025083/1, by the People Programme (Marie Curie Actions) of the European Union's Seventh Framework Programme (FP7/2007-2013) under REA grant agreement no. 608765 and from the European Union's Horizon 2020 research and innovation programme under the Marie Skłodowska-Curie grant agreement No 786833. Dr Sotoodehnia is supported by the following grants from the National Institutes of Health (NIH): R01HL141989, HL116747, and R01 HL111089, and by the Laughlin Family Fund. Dr Kornej was supported by the European Union's Horizon 2020 research and innovation programme under the Marie Skłodowska-Curie grant agreement No 838259. Dr Benjamin is supported by NIH grants HHSN26818HV00006R; 75N92019D00031; R01HL092577; 1R01HL128914; and American Heart Association 18SFRN34110082. Dr Lunetta is supported by R01 HL092577, AHA 18SFRN34230127, and 18SFRN34150007. Dr Ellinor is supported by the Fondation Leducq (14CVD01), by grants from the NIH (1R01HL092577, R01HL128914, K24HL105780), and by a grant from the AHA (18SFRN34110082). Dr Lubitz is supported by NIH grant 1R01HL139731 and AHA 18SFRN34250007. Additional funding and acknowledgments for each participating study are provided in the [Data Supplement](#).

Disclosures

Dr Lubitz receives sponsored research support from Bristol-Myers Squibb / Pfizer, Bayer AG, and Boehringer Ingelheim, and has consulted for Bristol Myers Squibb / Pfizer and Bayer AG. Dr Ellinor is supported by a grant from Bayer AG to the Broad Institute focused on the genetics and therapeutics of cardiovascular diseases. Dr Ellinor has also served on advisory boards or consulted for Bayer AG, Quest Diagnostics, Novartis, and MyoKardia. Dr Mook-Kanamori is a part-time clinical research consultant for Metabolon, Inc. The UMCG, which employs Dr de Boer, has received research grants or fees from AstraZeneca, Abbott, Bristol-Myers Squibb, Novartis, Novo Nordisk, and Roche. Dr de Boer received personal fees from Abbott, AstraZeneca, MandalMed, Inc, Novartis, and Roche. Psaty serves on the Steering Committee of the Yale Open Data Access Project funded by Johnson & Johnson.

REFERENCES

- Magnani JW, Williamson MA, Ellinor PT, Monahan KM, Benjamin EJ. P wave indices: current status and future directions in epidemiology, clinical, and research applications. *Circ Arrhythm Electrophysiol*. 2009;2:72–79. doi: 10.1161/CIRCEP.108.806828
- Nielsen JB, Kühl JT, Pietersen A, Graff C, Lind B, Struijk JJ, Olesen MS, Sinner MF, Bachmann TN, Haunsø S, et al. P-wave duration and the risk of atrial fibrillation: Results from the Copenhagen ECG Study. *Heart Rhythm*. 2015;12:1887–1895. doi: 10.1016/j.hrthm.2015.04.026
- Magnani JW, Zhu L, Lopez F, Pencina MJ, Agarwal SK, Soliman EZ, Benjamin EJ, Alonso A. P-wave indices and atrial fibrillation: cross-cohort assessments from the Framingham Heart Study (FHS) and Atherosclerosis Risk in Communities (ARIC) study. *Am Heart J*. 2015;169:53–61.e1. doi: 10.1016/j.ahj.2014.10.009
- Christophersen IE, Ellinor PT. Genetics of atrial fibrillation: from families to genomes. *J Hum Genet*. 2016;61:61–70. doi: 10.1038/jhg.2015.44
- Benjamin EJ, Wolf PA, D'Agostino RB, Silbershatz H, Kannel WB, Levy D. Impact of atrial fibrillation on the risk of death: the Framingham Heart Study. *Circulation*. 1998;98:946–952. doi: 10.1161/01.cir.98.10.946
- Wolf PA, Abbott RD, Kannel WB. Atrial fibrillation as an independent risk factor for stroke: the Framingham Study. *Stroke*. 1991;22:983–988. doi: 10.1161/01.str.22.8.983
- Wang TJ, Larson MG, Levy D, Vasan RS, Leip EP, Wolf PA, D'Agostino RB, Murabito JM, Kannel WB, Benjamin EJ. Temporal relations of atrial fibrillation and congestive heart failure and their joint influence on

- mortality: the Framingham Heart Study. *Circulation*. 2003;107:2920–2925. doi: 10.1161/01.CIR.0000072767.89944.6E
- Mosley JD, Shoemaker MB, Wells QS, Darbar D, Shaffer CM, Edwards TL, Bastarache L, McCarty CA, Thompson W, Chute CG, et al. Investigating the genetic architecture of the PR interval using clinical phenotypes. *Circ Cardiovasc Genet*. 2017;10:e001482.
 - Smith JG, Lowe JK, Kowali S, Maller JB, Salit J, Daly MJ, Stoffel M, Altshuler DM, Friedman JM, Breslow JL, et al. Genome-wide association study of electrocardiographic conduction measures in an isolated founder population: Kosrae. *Heart Rhythm*. 2009;6:634–641. doi: 10.1016/j.hrthm.2009.02.022
 - Christophersen IE, Magnani JW, Yin X, Barnard J, Weng LC, Arking DE, Niemeijer MN, Lubitz SA, Avery CL, Duan Q, et al. Fifteen genetic loci associated with the electrocardiographic P wave. *Circ Cardiovasc Genet*. 2017;10:e001667.
 - Verweij N, Mateo Leach I, van den Boogaard M, van Veldhuisen DJ, Christoffels VM, Hillege HL, van Gilst WH, Barnett P, de Boer RA, van der Harst P; LifeLines Cohort Study. Genetic determinants of P wave duration and PR segment. *Circ Cardiovasc Genet*. 2014;7:475–481. doi: 10.1161/CIRCGENETICS.113.000373
 - Liu DJ, Peloso GM, Zhan X, Holmen OL, Zawistowski M, Feng S, Nikpay M, Auer PL, Goel A, Zhang H, et al. Meta-analysis of gene-level tests for rare variant association. *Nat Genet*. 2014;46:200–204. doi: 10.1038/ng.2852
 - Machiela MJ, Chanock SJ. LDlink: a web-based application for exploring population-specific haplotype structure and linking correlated alleles of possible functional variants. *Bioinformatics*. 2015;31:3555–3557. doi: 10.1093/bioinformatics/btv402
 - Aguet F, Brown AA, Castel SE, Davis JR, He Y, Jo B, Mohammadi P, Park Y, Parsana P, Segrè AV, et al. Genetic effects on gene expression across human tissues. *Nature*. 2017;550:204–213.
 - Lin H, van Setten J, Smith AV, Bihlmeyer NA, Warren HR, Brody JA, Radmanesh F, Hall L, Grarup N, Müller-Nurasyid M, et al. Common and rare coding genetic variation underlying the electrocardiographic PR interval. *Circ Genom Precis Med*. 2018;11:e002037. doi: 10.1161/CIRCGEN.117.002037
 - Ntalla I, Weng LC, Cartwright JH, Hall AW, Sveinbjornsson G, Tucker NR, Choi SH, Chaffin MD, Roselli C, Barnes MR, et al. Multi-ancestry GWAS of the electrocardiographic PR interval identifies 202 loci underlying cardiac conduction. *Nat Commun*. 2020;11:2542. doi: 10.1038/s41467-020-15706-x
 - van Setten J, Brody JA, Jamshidi Y, Swenson BR, Butler AM, Campbell H, Del Greco FM, Evans DS, Gibson Q, Gudbjartsson DF, et al. PR interval genome-wide association meta-analysis identifies 50 loci associated with atrial and atrioventricular electrical activity. *Nat Commun*. 2018;9:2904. doi: 10.1038/s41467-018-04766-9
 - Roselli C, Chaffin MD, Weng LC, Aeschbacher S, Ahlberg G, Albert CM, Almgren P, Alonso A, Anderson CD, Aragam KG, et al. Multi-ethnic genome-wide association study for atrial fibrillation. *Nat Genet*. 2018;50:1225–1233. doi: 10.1038/s41588-018-0133-9
 - Xi Y, Shen W, Ma L, Zhao M, Zheng J, Bu S, Hino S, Nakao M. HMG2 promotes adipogenesis by activating C/EBP β -mediated expression of PPAR γ . *Biochem Biophys Res Commun*. 2016;472:617–623. doi: 10.1016/j.bbrc.2016.03.015
 - Meng F, Lin Y, Yang M, Li M, Yang G, Hao P, Li L. JAZF1 inhibits adipose tissue macrophages and adipose tissue inflammation in diet-induced diabetic mice. *Biomed Res Int*. 2018;2018:4507659. doi: 10.1155/2018/4507659
 - Hou X, Zhang Y, Li W, Hu AJ, Luo C, Zhou W, Hu JK, Daniele SG, Wang J, Sheng J, et al. CDK6 inhibits white to beige fat transition by suppressing RUNX1. *Nat Commun*. 2018;9:1023. doi: 10.1038/s41467-018-03451-1
 - Harrold JA, Widdowson PS, Williams G. beta-MSH: a functional ligand that regulated energy homeostasis via hypothalamic MC4-R? *Peptides*. 2003;24:397–405. doi: 10.1016/s0196-9781(03)00054-8
 - Brugger F, Wicki U, Nassenstein-Elton D, Fagg GE, Olpe HR, Pozza MF. Modulation of the NMDA receptor by D-serine in the cortex and the spinal cord, *in vitro*. *Eur J Pharmacol*. 1990;191:29–38. doi: 10.1016/0014-2999(90)94093-d
 - Tao Y, Zhang M, Li L, Bai Y, Zhou Y, Moon AM, Kaminski HJ, Martin JF. Pitx2, an atrial fibrillation predisposition gene, directly regulates ion transport and intercalated disc genes. *Circ Cardiovasc Genet*. 2014;7:23–32. doi: 10.1161/CIRCGENETICS.113.000259
 - Nadadur RD, Broman MT, Boukens B, Mazurek SR, Yang X, van den Boogaard M, Bekeny J, Gadek M, Ward T, Zhang M, et al. Pitx2 modulates a Tbx5-dependent gene regulatory network to maintain atrial rhythm. *Sci Transl Med*. 2016;8:354ra115. doi: 10.1126/scitranslmed.aaf4891
 - Lighthouse JK, Small EM. Transcriptional control of cardiac fibroblast plasticity. *J Mol Cell Cardiol*. 2016;91:52–60. doi: 10.1016/j.jmcc.2015.12.016

27. Monzen K, Ito Y, Naito AT, Kasai H, Hiroi Y, Hayashi D, Shiojima I, Yamazaki T, Miyazono K, Asashima M, et al. A crucial role of a high mobility group protein HMGA2 in cardiogenesis. *Nat Cell Biol.* 2008;10:567–574. doi: 10.1038/ncb1719
28. Wu QQ, Xiao Y, Liu C, Duan M, Cai Z, Xie S, Yuan Y, Wu H, Deng W, Tang O. The protective effect of high mobility group protein HMGA2 in pressure overload-induced cardiac remodeling. *J Mol Cell Cardiol.* 2019;128:160–178. doi: 10.1016/j.jmcc.2019.01.027
29. Shiraishi S, Zhou C, Aoki T, Sato N, Chiba T, Tanaka K, Yoshida S, Nabeshima Y, Nabeshima Y, Tamura TA. TBP-interacting protein 120B (TIP120B)/cullin-associated and neddylation-dissociated 2 (CAND2) inhibits SCF-dependent ubiquitination of myogenin and accelerates myogenic differentiation. *J Biol Chem.* 2007;282:9017–9028. doi: 10.1074/jbc.M611513200
30. Choi SH, Weng LC, Roselli C, Lin H, Haggerty CM, Shoemaker MB, Barnard J, Arking DE, Chasman DI, Albert CM, et al; DiscovEHR study and the NHLBI Trans-Omics for Precision Medicine (TOPMed) Consortium. Association between titin loss-of-function variants and early-onset atrial fibrillation. *JAMA.* 2018;320:2354–2364. doi: 10.1001/jama.2018.18179
31. Herman DS, Lam L, Taylor MR, Wang L, Teekakirikul P, Christodoulou D, Conner L, DePalma SR, McDonough B, Sparks E, et al. Truncations of titin causing dilated cardiomyopathy. *N Engl J Med.* 2012;366:619–628. doi: 10.1056/NEJMoa1110186
32. van Eldik W, den Adel B, Monshouwer-Kloots J, Salvatori D, Maas S, van der Made I, Creemers EE, Frank D, Frey N, Boontje N, et al. Z-disc protein CHAPb induces cardiomyopathy and contractile dysfunction in the postnatal heart. *PLoS One.* 2017;12:e0189139. doi: 10.1371/journal.pone.0189139
33. Lefebvre V. The SoxD transcription factors—Sox5, Sox6, and Sox13—are key cell fate modulators. *Int J Biochem Cell Biol.* 2010;42:429–432. doi: 10.1016/j.biocel.2009.07.016
34. Li A, Ahsen OO, Liu JJ, Du C, McKee ML, Yang Y, Wasco W, Newton-Cheh CH, O'Donnell CJ, Fujimoto JG, et al. Silencing of the Drosophila ortholog of SOX5 in heart leads to cardiac dysfunction as detected by optical coherence tomography. *Hum Mol Genet.* 2013;22:3798–3806. doi: 10.1093/hmg/ddt230
35. Carniel E, Taylor MR, Sinagra G, Di Lenarda A, Ku L, Fain PR, Boucek MM, Cavanaugh J, Miocic S, Slavov D, et al. Alpha-myosin heavy chain: a sarcomeric gene associated with dilated and hypertrophic phenotypes of cardiomyopathy. *Circulation.* 2005;112:54–59. doi: 10.1161/CIRCULATIONAHA.104.507699
36. Holm H, Gudbjartsson DF, Sulem P, Masson G, Helgadóttir HT, Zanon C, Magnusson OT, Helgason A, Saemundsdóttir J, Gylfason A, et al. A rare variant in MYH6 is associated with high risk of sick sinus syndrome. *Nat Genet.* 2011;43:316–320. doi: 10.1038/ng.781
37. Granados-Riveron JT, Ghosh TK, Pope M, Bu'Lock F, Thornborough C, Eason J, Kirk EP, Fatkin D, Feneley MP, Harvey RP, et al. Alpha-cardiac myosin heavy chain (MYH6) mutations affecting myofibril formation are associated with congenital heart defects. *Hum Mol Genet.* 2010;19:4007–4016. doi: 10.1093/hmg/ddq315
38. Li N, Csepe TA, Hansen BJ, Dobrzynski H, Higgins RS, Kilic A, Mohler PJ, Janssen PM, Rosen MR, Biesiadecki BJ, et al. Molecular mapping of sinoatrial node HCN channel expression in the human heart. *Circ Arrhythm Electrophysiol.* 2015;8:1219–1227. doi: 10.1161/CIRCEP.115.003070
39. Yang T, Atack TC, Stroud DM, Zhang W, Hall L, Roden DM. Blocking Scn10a channels in heart reduces late sodium current and is antiarrhythmic. *Circ Res.* 2012;111:322–332. doi: 10.1161/CIRCRESAHA.112.265173
40. Barcellos KS, Bigarella CL, Wagner MV, Vieira KP, Lazarini M, Langford PR, Machado-Neto JA, Call SG, Staley DM, Chung JY, et al. ARHGAP21 protein, a new partner of α -tubulin involved in cell-cell adhesion formation and essential for epithelial-mesenchymal transition. *J Biol Chem.* 2013;288:2179–2189. doi: 10.1074/jbc.M112.432716
41. Fischer-Kešo R, Breuninger S, Hofmann S, Henn M, Röhrig T, Ströbel P, Stoecklin G, Hofmann I. Plakophilins 1 and 3 bind to FXR1 and thereby influence the mRNA stability of desmosomal proteins. *Mol Cell Biol.* 2014;34:4244–4256. doi: 10.1128/MCB.00766-14
42. Yi SL, Liu XJ, Zhong JQ, Zhang Y. Role of caveolin-1 in atrial fibrillation as an anti-fibrotic signaling molecule in human atrial fibroblasts. *PLoS One.* 2014;9:e85144. doi: 10.1371/journal.pone.0085144
43. Thorólfsson RB, Sveinbjörnsson G, Sulem P, Nielsen JB, Jonsson S, Halldorsson GH, Melsted P, Ivarsdóttir EV, Davidsson OB, Kristjánsson RP, et al. Coding variants in RPL3L and MYZAP increase risk of atrial fibrillation. *Commun Biol.* 2018;1:68. doi: 10.1038/s42003-018-0068-9
44. Gonna H, Gallagher MM, Guo XH, Yap YG, Hnatkova K, Camm AJ. P-wave abnormality predicts recurrence of atrial fibrillation after electrical cardioversion: a prospective study. *Ann Noninvasive Electrocardiol.* 2014;19:57–62. doi: 10.1111/anec.12087
45. Caldwell J, Koppikar S, Barake W, Redfearn D, Michael K, Simpson C, Hopman W, Baranchuk A. Prolonged P-wave duration is associated with atrial fibrillation recurrence after successful pulmonary vein isolation for paroxysmal atrial fibrillation. *J Interv Card Electrophysiol.* 2014;39:131–138. doi: 10.1007/s10840-013-9851-1
46. He J, Tse G, Korantzopoulos P, Letsas KP, Ali-Hasan-Al-Saegh S, Kamel H, Li G, Lip GYH, Liu T. P-wave indices and risk of ischemic stroke: a systematic review and meta-analysis. *Stroke.* 2017;48:2066–2072. doi: 10.1161/STROKEAHA.117.017293