

Prognostic Value of Right Ventricular Function in Patients After Acute Myocardial Infarction Treated With Primary Percutaneous Coronary Intervention

M. Louisa Antoni, MD; Roderick W.C. Scherptong, MD; Jael Z. Atary, MD; Eric Boersma, PhD; Eduard R. Holman, MD, PhD; Ernst E. van der Wall, MD, PhD; Martin J. Schalij, MD, PhD; Jeroen J. Bax, MD, PhD

Background—Data on the association between right ventricular (RV) function and adverse events after acute myocardial infarction (AMI) are scarce. The purpose of the current study was to evaluate the relation between RV function and adverse events in patients treated with primary percutaneous coronary intervention for AMI.

Methods and Results—Consecutive patients admitted with AMI treated with primary percutaneous coronary intervention underwent echocardiography within 48 hours of admission to assess left ventricular and RV function. RV function was quantified with RV fractional area change (RVFAC), tricuspid annular plane systolic excursion, and RV strain. The end point was defined as a composite of all-cause mortality, reinfarction, and hospitalization for heart failure. All patients (n=621) were followed prospectively, and during a mean follow-up of 24 months, 86 patients reached the composite end point. RVFAC, tricuspid annular plane systolic excursion, and RV strain were all univariable predictors of worse outcome. After multivariable analysis, only RVFAC (hazard ratio, 0.96; 95% CI, 0.92 to 0.99) and RV strain (hazard ratio, 1.08; 95% CI, 1.03 to 1.13) independently predicted the composite end point. In addition, RV strain provided incremental value to clinical information, infarct characteristics, left ventricular function, and RVFAC.

Conclusions—RV function provides strong prognostic information in patients treated with primary percutaneous coronary intervention for AMI. (*Circ Cardiovasc Imaging*. 2010;3:264-271.)

Key Words: echocardiography ■ myocardial infarction ■ prognosis

The prognosis of patients after acute myocardial infarction (AMI) is determined by the interaction of a large number of factors. Besides the importance of clinical parameters, several studies have described the use of 2D echocardiography for the identification of patients who are at risk of adverse outcome.¹ These investigations revealed that the presence of left ventricular (LV) dysfunction, on 2D-echocardiography shortly after AMI, is one of the most important prognostic parameters.^{2,3} Therefore, noninvasive assessment of LV function has become essential for post-AMI risk stratification.

Clinical Perspective on p 271

The relevance of right ventricular (RV) function, on the other hand, is poorly defined in post-AMI patients. The involvement of the RV during inferior AMI has been defined as a strong predictor of major complications and in-hospital mortality.^{4,5} Some evidence is available that RV dysfunction is associated with an adverse prognosis in post-AMI patients

with moderate to severe LV dysfunction.^{6,7} In patients who undergo primary percutaneous coronary intervention (PCI), however, the degree of LV dysfunction is generally mild and the clinical relevance of RV dysfunction in that currently growing population of post-AMI patients is unknown. Therefore, the aim of the current study was to investigate the relation between RV function and adverse events in post-AMI patients treated with primary PCI. In addition to traditional measurements that are recommended to quantify RV function with 2D-echocardiography, RV strain was assessed. This novel technique enables direct quantification of myocardial deformation and is a sensitive tool to detect RV dysfunction.⁸⁻¹¹

Methods

Patient Selection and Study Protocol

Since February 2004, consecutive patients admitted with AMI treated with primary PCI were included in an ongoing registry. All patients were treated according to the institutional AMI protocol,

Received October 6, 2009; accepted February 17, 2010.

From the Department of Cardiology (M.L.A., R.W.C.S., J.Z.A., E.R.H., E.E.v.d.W., M.J.S., J.J.B.), Leiden University Medical Center, Leiden, The Netherlands; and Erasmus Medical Center University (E.B.), Rotterdam, The Netherlands.

Correspondence to Jeroen J. Bax, MD, PhD, Department of Cardiology, Leiden University Medical Center, PO Box 9600, 2300RC Leiden, The Netherlands. E-mail jj.bax@lumc.nl

© 2010 American Heart Association, Inc.

Circ Cardiovasc Imaging is available at <http://circimaging.ahajournals.org>

DOI: 10.1161/CIRCIMAGING.109.914366

which is driven by the most recent guidelines.¹ This protocol, designed to improve care around AMI, includes structured medical therapy and outpatient follow-up, as described previously.¹² In addition, 2D echocardiography is performed within 48 hours of admission. This echocardiogram was used to assess LV and RV function. All patients were followed prospectively and the occurrence of adverse events was noted. Patients of whom more than 6 months of follow-up data were lacking were considered lost to follow-up and excluded from further analysis.

Echocardiography

Images were obtained with patients in the left lateral decubitus position using a commercially available system (Vivid 7, General Electric-Vingmed, Horton, Norway). Data acquisition was performed at a depth of 16 cm in the parasternal and apical views using a 3.5-MHz transducer. During breath-hold, M-mode and 2D images were obtained and 3 consecutive beats were saved in cine-loop format. Analysis was performed offline by 2 independent observers using dedicated software (EchoPac version 108.1.5, General Electric-Vingmed). The reference limits of all echocardiographic parameters were defined according to American Society of Echocardiography Guidelines.¹³

The LV end-systolic volume (LVESV) end-diastolic volume (LVEDV) were assessed and LV ejection fraction (LVEF) was calculated using the biplane Simpson method.¹³

In addition, the LV was divided into 16 segments, and each segment was analyzed individually and scored based on its motion and systolic thickening (1, normokinesis; 2, hypokinesis; 3, akinesis; and 4, dyskinesis). Subsequently, wall motion score index (WMSI) was calculated as the sum of the segment scores divided by the number of segments scored.¹³

Left atrial (LA) size was quantified by calculating the volume according to the ellipsoid model.¹³ Severity of mitral regurgitation (MR) was graded semiquantitatively from the jet area of color-flow Doppler data and by measuring the width of the vena contracta. MR was characterized as: mild, jet area/LA area <20% and vena contracta width <0.3 cm; moderate, jet area/LA area 20% to 40% and vena contracta width 0.3 to 0.69 cm; and severe, jet area/LA area >40% and vena contracta width ≥ 0.7 cm.¹⁴

Tricuspid regurgitation (TR) severity was graded based on jet/right atrial area ratio. When the jet area occupied <10% of the right atrial area, TR was graded as trivial, 10% to <20% as mild, 20% to <33% as moderate, $\geq 33\%$ as severe.¹⁵ In addition, the diameter of inferior vena cava and its respiratory variation were measured 1.0 to 2.0 cm from the junction with the right atrium in the subcostal view, as recommended by the guidelines.¹³

To assess diastolic function, pulsed-wave Doppler of the mitral valve inflow was obtained by placing the sample volume between the tips of the mitral leaflets. Peak early (E) and late (A) diastolic velocities and deceleration time were measured. The E/E' ratio was obtained by dividing E by E', which was measured using color-coded tissue Doppler imaging at the septal side of the mitral annulus in the apical 4-chamber view.^{16–18}

RV Function Analysis

RV fractional area change (RVFAC) was analyzed by tracing the RV end-diastolic area (RVDA) and end-systolic area (RVSA) in the apical 4-chamber view using the formula (RVDA-RVSA)/RVDA $\times 100$.¹³ Tricuspid annular plane systolic excursion (TAPSE) was measured in the RV free wall. In the 4-chamber view, the M-mode cursor was placed through the tricuspid annulus in such a way that the annulus moved along the M-mode cursor and the total displacement of the RV base from end-diastole to end-systole was measured.¹⁹

Peak systolic longitudinal strain of the RV free wall was measured in the 4-chamber view using speckle-tracking analysis.²⁰ This novel software analyzes motion by tracking frame-to-frame movement of natural acoustic markers in 2 dimensions. All images were recorded with a frame rate of >40 fps for reliable analysis. The RV endocardial border was manually traced at end-systole and the automatically created region of interest was adjusted to the thickness

of the myocardium. Peak systolic longitudinal strain was determined in the 3 segments of the RV free wall (basal, mid, and apical), and RV strain was calculated as the mean value of all segments. Segments were discarded if tracking was of poor quality. Strain analysis was feasible in 85% of segments.

Statistical Analysis

Continuous data are presented as mean \pm standard deviation and categorical data are presented as frequencies and percentages. Differences in characteristics between patient groups were evaluated using the unpaired Student *t* test and χ^2 test.

The primary aim was to assess the association between RV function and adverse events after adjusting for clinical and echocardiographic covariates. Separate multivariable models were constructed for RVFAC, TAPSE, and RV strain using Cox proportional hazards analysis to evaluate the individual prognostic importance of the different RV function measurements. Selection of parameters for entry in the multivariable models was based both on clinical judgment and univariable statistical significance. Based on these considerations, adjustments in the multivariable models were made for age, Killip class ≥ 2 , right coronary artery (RCA) as culprit vessel, multivessel disease, peak cardiac troponin T (cTnT) level, LVEF, WMSI, E/E' ratio, and moderate or severe MR. Peak creatine phosphokinase level and LVESV were not included in multivariable analyses to avoid collinearity with peak cTnT level and LVEF.

In addition, multiple variable analysis was performed for all events individually. Nonfatal reinfarction was defined based on criteria of typical chest pain, elevated cardiac enzyme levels, and typical changes on the ECG.²¹ Hospitalization for heart failure (HF) was defined as hospitalization for new-onset or worsening HF. Because only a small number of 29 patients reached the end point of HF, no further subdivision was made for the cause of HF.

To further investigate the clinical relevance of RV dysfunction, the population was stratified into 2 groups according to RV function. For RVFAC and TAPSE, cut-offs were defined according to the guidelines: 32% and 1.5 cm, respectively.¹³ The normal value of RV strain has been reported to be $-29.3 \pm 3.6\%$.²² Patients were therefore divided according to the mean value ± 2 SD, which is the lower limit of normal RV strain (-22.1%). Event rates were plotted in Kaplan-Meier curves for the composite end point, the study population was divided by the previously mentioned cut-offs, and groups were compared using the log-rank test. The date of last contact for patients without events was used in Kaplan-Meier analysis. Finally, univariable and multivariable Cox proportional hazards analyses were performed for RVFAC, TAPSE, and RV strain, dichotomized by the cut-offs.

The incremental value of RV function, in addition to known risk factors for adverse outcome (age, Killip class ≥ 2 , RCA as culprit vessel, multivessel disease, peak cTnT level, LVEF, WMSI, E/E' ratio, and moderate or severe MR), was established. For this purpose, those characteristics were entered in the Cox proportional hazard model in a stepwise fashion. Subsequently, RVFAC and RV strain were entered individually. In addition, RV strain was entered into the model of RVFAC to test further incremental value. Global χ^2 values including significance levels were calculated.

All statistical tests were 2-sided, and a probability value <0.05 was considered statistically significant.

Results

Patient Characteristics and Follow-Up

A total of 682 patients were included. Nine (1.3%) patients died before echocardiographic assessment could be performed, and in 22 (3.2%) patients echocardiographic assessment was not available within 48 hours of admission due to logistic reasons. Thirty patients (4.4%) were lost to follow-up and were excluded from further analysis. The study population consisted of the remaining 621 consecutive patients

Table 1. Baseline Clinical Characteristics

	All Patients (n=621)	Event (n=86)	Event-Free (n=535)	<i>P</i> (Event vs Event-Free)
Age, y	60±12	65±14	60±11	0.001
Male sex	486 (78%)	67 (78%)	419 (78%)	0.93
Killip class ≥2	57 (10%)	26 (33%)	31 (6%)	<0.001
Current smoking	313 (51%)	42 (49%)	271 (51%)	0.83
Diabetes	61 (10%)	14 (16%)	47 (9%)	0.03
Family history of CAD	253 (41%)	28 (33%)	225 (42%)	0.11
Hypertlipidemia	125 (20%)	19 (22%)	106 (20%)	0.64
Hypertension	190 (31%)	34 (40%)	156 (29%)	0.05
Prior myocardial infarction	45 (7%)	13 (15%)	32 (6%)	0.002
RCA culprit vessel	217 (35%)	22 (26%)	195 (36%)	0.05
Multivessel disease	300 (49%)	53 (63%)	247 (46%)	0.004
TIMI flow				0.11
0 to 1	5 (1%)	2 (2%)	3 (1%)	
2	28 (5%)	6 (7%)	22 (4%)	
3	588 (95%)	78 (91%)	510 (95%)	
Peak CPK level, U/L	2508±2116	4014±3046	2266±1815	<0.001
Peak cTnT level, μg/L	7.1±7.0	12.8±11.3	6.2±5.5	<0.001
Medication at 6-mo follow-up				
ACE inhibitor/ARB	575 (98%)	55 (98%)	520 (98%)	0.82
Antiplatelets	588 (100%)	56 (100%)	532 (100%)	1.00
β-blocker	538 (92%)	52 (93%)	486 (91%)	0.70
Statin	578 (98%)	55 (98%)	523 (98%)	0.96

CAD indicates coronary artery disease; RCA, right coronary artery; TIMI, Thrombolysis In Myocardial Infarction; CPK, creatine phosphokinase; ACE, angiotensin-converting enzyme; and ARB, angiotensin receptor blocker.

admitted with AMI treated with primary PCI. Tables 1 and 2 summarize the clinical and echocardiographic characteristics of the population. Mean age was 60±12 years, and most patients were men (78%). Mean LVEF, RVFAC, TAPSE, and RV strain were 45±8%, 37±9%, 1.7±0.2 cm, and -22±7%, respectively.

Fifty-seven patients (10%) presented with congestive HF defined as Killip class ≥2. Patients with congestive HF had significantly lower TAPSE (1.6±0.2 cm versus 1.7±0.2 cm, *P*=0.01) and RV strain (-19±6% versus -22±7%, *P*=0.02). No differences were observed in RVFAC and patients with and without congestive HF (37±10% versus 37±9%, *P*=0.71).

The RCA was the culprit vessel in 217 patients (35%). No differences in RVFAC (36±9% versus 38±9%, *P*=0.07), TAPSE (1.7±0.2 cm versus 1.7±0.2 cm, *P*=0.28), and RV strain (-21±7% versus -22±7%, *P*=0.38) were observed in patients with and without inferior AMI.

LV dysfunction (defined as LVEF <40%) was observed in 151 patients (24%). When comparing RV function in patients with and without LV dysfunction, no significant differences were observed in RVFAC (37±9% versus 38±9%, *P*=0.31) and RV strain -21±7% versus -22±7%, *P*=0.09). How-

Table 2. Baseline Echocardiographic Characteristics

	All Patients (n=621)	Event (n=86)	Event-Free (n=535)	<i>P</i> (Event vs Event-Free)
LVESV, mL	58±22	67±32	56±20	0.006
LVEDV, mL	105±34	111±43	104±33	0.20
LVEF, %	45±8	41±9	46±8	<0.001
WMSI	1.5±0.3	1.7±0.3	1.5±0.3	<0.001
E/A ratio	1.0±0.4	1.0±0.4	1.0±0.4	0.10
Deceleration time, ms	211±74	199±68	213±75	0.11
E/E' ratio	13±6	15±8	13±5	0.05
Moderate or severe MR	44 (7%)	14 (17%)	30 (6%)	<0.001
Moderate or severe PR	2 (0.3%)	0 (0%)	2 (0.4%)	0.60
Moderate or severe TR	24 (4%)	5 (7%)	19 (4%)	0.17
LA volume index, mL/m ²	16±6	17±6	16±6	0.29
RVDA, cm ²	15±4	17±5	15±4	0.001
RVSA, cm ²	10±4	11±4	9±3	<0.001
RVFAC, %	37±9	33±8	38±9	<0.001
TAPSE	1.7±0.2	1.6±0.3	1.7±0.2	0.07
RV strain, %	-22±7	-17±7	-22±7	<0.001

PR indicates pulmonary regurgitation.

ever, TAPSE was significantly lower in patients with LV dysfunction compared with patients without LV dysfunction (1.6±0.2 cm versus 1.7±0.2 cm, *P*=0.02).

TAPSE was the only RV function measurement that differed significantly in patients with multivessel disease compared with patients without multivessel disease (1.6±0.2 cm versus 1.7±0.2, *P*=0.03).

Table 3. Cox Univariable Predictors for the Composite End Point

	HR	95% CI	<i>P</i>
Age, per 1-y increase	1.05	1.02–1.07	<0.001
Killip class ≥2, yes/no	5.05	3.15–8.08	<0.001
Prior myocardial infarction, yes/no	2.57	1.42–4.65	0.002
Multivessel disease, yes/no	1.88	1.21–2.92	0.005
Peak creatine phosphokinase level, per 100 U/L increase	1.02	1.02–1.03	<0.001
Peak cTnT level, per 1 μg/L increase	1.08	1.06–1.10	<0.001
LVESV, per 5 mL increase	1.07	1.03–1.12	0.001
LVEF, per 1% increase	0.93	0.91–0.96	<0.001
WMSI, per 1 unit increase	10.95	5.02–23.90	<0.001
E/A ratio, per 1 unit increase	1.87	1.09–3.21	0.02
E/E' ratio, per 1 unit increase	1.05	1.02–1.09	0.003
Moderate or severe MR, yes/no	3.38	1.90–6.02	<0.001
RVFAC, per 1% increase	0.94	0.92–0.97	<0.001
RVFAC <32%, yes/no	2.22	1.39–3.54	0.001
TAPSE, per 1 cm increase	0.10	0.03–0.38	0.001
TAPSE <1.5 cm, yes/no	4.00	2.45–6.53	<0.001
RV strain, per 1% increase	1.10	1.06–1.14	<0.001
RV strain <-22.1%, yes/no	3.43	1.87–6.29	<0.001

Table 4. Cox Multivariable Model With RVFAC for the Composite End Point

	HR	95% CI	P
Killip class ≥ 2 , yes/no	2.99	1.51–5.92	0.002
Multivessel disease, yes/no	1.92	1.04–3.56	0.04
Peak cTnT level, per 1 $\mu\text{g/L}$ increase	1.05	1.01–1.08	0.008
LVEF, per 1% increase	0.95	0.91–0.99	0.01
RVFAC, per 1% increase	0.96	0.92–0.99	0.007

During a mean follow-up of 24 ± 15 months, 86 patients (14%) reached the composite end point: 51 patients died (8%), 16 patients (3%) had a nonfatal reinfarction, and 29 patients (5%) were hospitalized for HF. Differences in clinical and echocardiographic characteristics between patients who reached the composite end point and patients who remained event-free are shown in Tables 1 and 2.

RV Function and Association With Outcome

Table 3 shows the significant univariable predictors of the composite end point. In addition to clinical characteristics and echocardiographic measurements of LV function, RV function significantly predicted worse outcome. RVFAC, TAPSE, and RV strain were univariable predictors of the composite end point. After adjusting RVFAC, TAPSE, and RV strain for other variables that predicted adverse outcome, RVFAC and RV strain independently predicted the occurrence of the composite end point (Tables 4 and 5). However, TAPSE did not remain significant in the multiple variable analysis (hazard ratio [HR], 0.88; 95% CI, 0.16 to 4.81; $P=0.88$).

In addition, analysis was performed for RVFAC, TAPSE, and RV strain dichotomized according to normal and abnormal RV function with the above described cut-offs. Univariable analysis performed with the cut-offs demonstrated a HR of 2.22 (95% CI, 1.39 to 3.54; $P=0.001$) for RVFAC. For TAPSE and RV strain, HRs of 4.00 (95% CI, 2.45 to 6.53; $P<0.001$) and 3.43 (95% CI, 1.87 to 6.29; $P<0.001$) were observed, demonstrating better discriminative power than RVFAC. Multiple variable analysis performed with the cut-offs showed smaller HRs of 1.97 (95% CI, 1.10 to 3.55; $P=0.02$) for RVFAC, 2.19 (95% CI, 1.17 to 4.12; $P=0.02$) for TAPSE, and 2.18 (95% CI, 1.10 to 4.29; $P=0.03$) for RV strain.

Kaplan-Meier curves for the cut-offs of RVFAC, TAPSE, and RV strain and the composite end point are shown in Figure 1. The 4-year event rate in patients with RVFAC $<32\%$ ($n=145$) was 29% compared with 16% in patients with RVFAC $\geq 32\%$ ($n=454$, $P=0.01$). The incidence of adverse events at 4 years was 45% in patients with TAPSE <1.5 cm ($n=180$) and 9% in patients with TAPSE ≥ 1.5 cm ($n=411$, $P<0.001$). Patients divided in RV strain $<-22.1\%$ ($n=256$) and $\geq -22.1\%$ ($n=273$) demonstrated a 4-year event rate at of 23% and 7%, respectively ($P<0.001$).

With the exception of nonfatal reinfarction, multiple-variable analysis showed that RVFAC and RV strain were independent predictors of all events. RVFAC demonstrated HRs of 0.93 (95% CI, 0.90 to 0.97; $P=0.001$) and 0.94 (95% CI, 0.89 to 0.99; $P=0.05$) and RV strain HRs of 1.10 (95%

Table 5. Cox Multivariable Model With RV Strain for the Composite End Point

	HR	95% CI	P
Killip class ≥ 2 , yes/no	3.18	1.58–6.41	0.001
Multivessel disease, yes/no	2.03	1.07–3.86	0.03
Peak cTnT level, per 1 $\mu\text{g/L}$ increase	1.06	1.01–1.10	0.01
LVEF, per 1% increase	0.95	0.91–0.99	0.01
RV strain, per 1% increase	1.08	1.03–1.13	0.002

CI, 1.03 to 1.16; $P=0.003$) and 1.16 (95% CI, 1.07 to 1.26; $P=0.001$) for all-cause mortality and hospitalization for HF, respectively. In addition, when early deaths (defined as deaths occurring during index hospitalization) were excluded from multiple variable analysis, RVFAC and RV strain remained independent predictors of all-cause mortality (HR, 0.93; 95% CI, 0.89 to 0.97; $P=0.001$; and HR, 1.07; 95% CI, 1.01 to 1.14; $P=0.04$, respectively).

Incremental Value of RV Function in Addition to Traditional Risk Factors

Global χ^2 scores were calculated to assess the incremental value of RV function. RV function quantified by RVFAC and RV strain provided incremental value to clinical information (age and Killip class ≥ 2), infarct characteristics (RCA as culprit vessel, multivessel disease, and peak cTnT level), and LV systolic and diastolic function (LVEF, WMSI, and E/E' ratio and moderate or severe MR). In addition, RV strain was added to the RVFAC model, which was demonstrated to increase the predictive power of the model even further (Figure 2). Interestingly, TAPSE, did not have incremental value in addition to clinical information, infarct characteristics, and LV function.

Discussion

The major finding of the present study was that RVFAC, TAPSE, and RV strain were strong predictors of the composite end point all-cause mortality, reinfarction, and hospitalization for HF. In addition, the prognostic value of several traditional risk factors, including Killip class, peak cardiac enzymes, multivessel disease, and LV function, was again confirmed. After adjusting for known risk factors of adverse outcome after AMI, RVFAC (HR, 0.96; 95% CI, 0.92 to 0.99) and RV strain (HR, 1.08; 95% CI, 1.03 to 1.13) independently predicted the composite end point. In addition, the cut-off for RV strain at $<-22.1\%$ was associated with an adjusted HR of 2.18 for the occurrence of the composite end point. Moreover, RV strain $<-22.1\%$ provided incremental value over clinical information, infarct characteristics, LV function, and RVFAC for the prediction of adverse outcome in post-AMI patients. However, RV function failed to provide prognostic information for the prediction of nonfatal reinfarction individually.

Quantification of RV Function

Multiple methods have been described to quantify RV function with 2D echocardiography. In clinical practice, qualita-

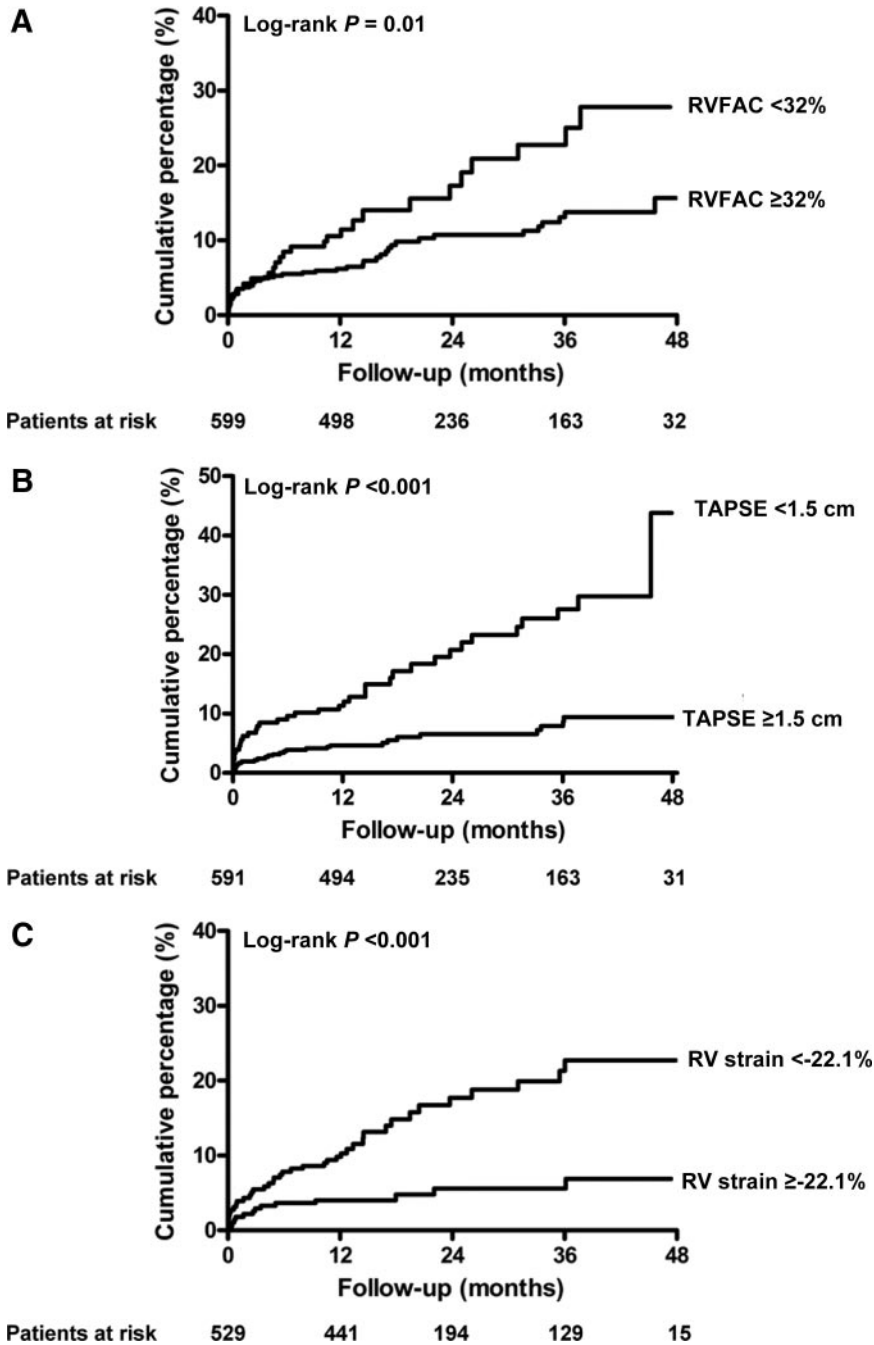


Figure 1. Cumulative incidence of adverse events. Patients are stratified by RVFAC (A), tricuspid annular plane systolic excursion (B), and RV strain (C).

tive assessment of RV function is usually performed, whether or not in combination with TAPSE or RVFAC.¹³ Both measurements are simple to perform and associated with prognosis, particularly in patients with LV dysfunction after AMI.^{6,7,19} In contrast to previous studies, the current study evaluated the importance of RV function in a large population of post-AMI patients treated with primary PCI and relatively preserved LV function. In addition to TAPSE and RVFAC, we assessed RV strain. Although RVFAC, TAPSE, and RV strain are highly correlated, they measure different aspects of RV function. RVFAC is the most commonly used measurement to assess RV contractility. However, the measurement of RVFAC is experience-dependent and reproducibility is often poor. Therefore, RVFAC may not adequately reflect

contractility. TAPSE is another frequently used measurement to assess RV function and reflects the longitudinal systolic excursion of the lateral tricuspid valve annulus, which may not fully reflect RV contractility. Strain is a novel technique that enables angle-independent measurement of active myocardial deformation. Previous studies indicated that subtle but clinically relevant decreases in ventricular function can be detected using strain, and we therefore hypothesized that this may also apply for subtle changes in RV function after AMI.^{10,22–25} Peak RV longitudinal strain, which quantifies the maximal shortening in the RV free wall from apex to base, is likely to be a good estimator of RV function because 80% of the stroke volume is generated by longitudinal shortening of the RV free wall.²⁶

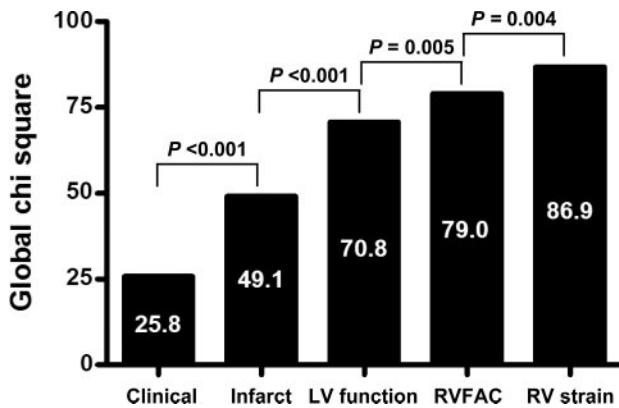


Figure 2. Incremental value of RV function. Bar graph illustrates incremental value of RV function (depicted by χ^2 value on the y-axis). Addition of RVFAC and RV strain provides incremental value to known risk factors for adverse outcome related to clinical information (age, Killip class ≥ 2), infarct characteristics (RCA as culprit vessel, multivessel disease, and peak cTnT level), and LV function (LVEF, WMSI, E/E' ratio, and moderate or severe MR).

The results of the current study point out for the first time, to our knowledge, that reduced strain of the RV is a strong independent predictor of adverse events in post-AMI patients. RV strain, even after correction for clinical information, infarct characteristics, and LV function, was demonstrated to be of incremental value in addition to RVFAC. In addition, RV strain may detect RV dysfunction earlier than RVFAC because the Kaplan-Meier estimates showed earlier divergence for RV strain than RVFAC (Figure 1).

TAPSE has been found to correlate with LVEF, which is an important predictor of adverse outcome in AMI patients and thus may explain the earlier separation on the graphs.

This indicates that RV strain may be superior to traditional measures of RV function for the prediction of adverse events after AMI.

RV Function and Outcome

In the past, the clinical importance of RV function has been underestimated. Although RV dysfunction was reported to recover to some extent after AMI, recently the value of RV function for the prediction of long-term outcome has been well recognized in patients with inferior AMI and LV dysfunction.^{27,28} Mehta et al²⁹ showed in a meta-analysis that patients with RV involvement in inferior AMI were at increased risk of adverse events and demonstrated that RV involvement is not due to more extensive infarction of the LV. In post-AMI patients with LV dysfunction, Anavekar et al⁶ and Zornoff et al⁷ confirmed that RV function is weakly correlated with LV function and demonstrated that RV function quantified with RVFAC was independently associated with an increased risk of mortality and HF.

In the current study, RV function was studied extensively with assessments currently used in clinical practice (TAPSE and RVFAC) and novel speckle-tracking-derived strain. All measurements of the RV were related to adverse prognosis. After adjusting for other variables that predicted adverse outcome, RVFAC and RV strain independently predicted the occurrence of the composite end point (all-cause mortality,

reinfarction, and hospitalization for HF). TAPSE, on the other hand, was a strong univariate predictor of adverse events but did not remain significant in multivariable analysis. The prognostic value of TAPSE in AMI patients was investigated by Samad et al¹⁹ in 194 AMI patients; TAPSE was an independent predictor of mortality after adjustment for LVEF and age. However, in the GISSI-3 echo substudy, which included 500 AMI patients, TAPSE was significantly associated with LVEF, which may explain why TAPSE did not provide incremental value to clinical information, infarct characteristics, and LV function and why TAPSE was not an independent predictor of adverse outcome.²⁸

RV Strain

Although strain was primarily developed for the measurement of LV deformation, previous reports have demonstrated the usefulness of RV strain in several populations to detect subtle changes in RV function.^{9–11} Measurement of longitudinal strain of the RV is a reliable method for the assessment of RV function, because 80% of the stroke volume is generated by longitudinal shortening of the RV free wall.³⁰ To the best of our knowledge, this is the first study to examine the value of RV strain in post-AMI patients. RV strain provided incremental value to traditional measurements of RV function, and the quantification of RV strain is simple to perform and highly feasible.

Clinical Implications

The results of the current study suggest that routine assessment of RV function should be implemented in the follow-up of AMI patients. RV strain measured early after AMI appeared to be superior to RVFAC and TAPSE for the risk stratification of AMI patients and could facilitate in the identification of patients who are at risk for adverse events.

Limitations

RV infarction complicates about 50% of inferior AMI. ST-segment elevations and Q waves in the right precordial leads have shown to have a high diagnostic accuracy for RV infarctions. Unfortunately, in the present study, right precordial leads were not applied during electrocardiography; however, no significant differences in RV function parameters were observed in patients with and without inferior infarction.

For the current study, the cut-off for RV strain was chosen at 2 SD from the normal RV strain in a group of 60 healthy subjects.²² Normal limits of RV strain derived from larger populations are currently lacking. Therefore, future research should aim at defining normal limits for RV strain and validating these cut-offs in relation to clinical end points.

Although RV function at baseline was a good predictor of outcome in AMI patients, the predictive value of RV function at different periods after AMI could not be addressed. Changes in RV function could occur in the first weeks after AMI, and serial assessment of RV function would be interesting.

Conclusions

RV function provides strong prognostic information in AMI patients treated with primary PCI. RV strain is an indepen-

dent predictor of all-cause mortality, reinfarction, and hospitalization for HF. In addition, RV strain provides incremental value over clinical information, infarct characteristics, LV function, and RVFAC. Quantitative assessment of RV function with RV strain may improve the risk stratification of patients after AMI.

Disclosures

Dr Bax received grants from GE Healthcare, BMS Medical Imaging, St Jude Medical, Medtronic, Boston Scientific, Biotronik, and Edwards Lifesciences. Dr Schalij received grants from Boston Scientific, Medtronic, and Biotronik.

References

- Antman EM, Anbe DT, Armstrong PW, Bates ER, Green LA, Hand M, Hochman JS, Krumholz HM, Kushner FG, Lamas GA, Mullany CJ, Ornato JP, Pearle DL, Sloan MA, Smith SC Jr, Alpert JS, Anderson JL, Faxon DP, Fuster V, Gibbons RJ, Gregoratos G, Halperin JL, Hiratzka LF, Hunt SA, Jacobs AK. ACC/AHA guidelines for the management of patients with ST-elevation myocardial infarction—executive summary: a report of the American College of Cardiology/American Heart Association Task Force on Practice Guidelines (Writing Committee to Revise the 1999 Guidelines for the Management of Patients With Acute Myocardial Infarction). *Circulation*. 2004;110:588–636.
- Moller JE, Hillis GS, Oh JK, Reeder GS, Gersh BJ, Pellikka PA. Wall motion score index and ejection fraction for risk stratification after acute myocardial infarction. *Am Heart J*. 2006;151:419–425.
- White HD, Norris RM, Brown MA, Brandt PW, Whitlock RM, Wild CJ. Left ventricular end-systolic volume as the major determinant of survival after recovery from myocardial infarction. *Circulation*. 1987;76:44–51.
- Bueno H, Lopez-Palop R, Bermejo J, Lopez-Sendon JL, Delcan JL. In-hospital outcome of elderly patients with acute inferior myocardial infarction and right ventricular involvement. *Circulation*. 1997;96:436–441.
- Zehender M, Kasper W, Kauder E, Schonhaller M, Geibel A, Olschewski M, Just H. Right ventricular infarction as an independent predictor of prognosis after acute inferior myocardial infarction. *N Engl J Med*. 1993;328:981–988.
- Anavekar NS, Skali H, Bourgoun M, Ghali JK, Kober L, Maggioni AP, McMurray JJ, Velazquez E, Califf R, Pfeffer MA, Solomon SD. Usefulness of right ventricular fractional area change to predict death, heart failure, and stroke following myocardial infarction (from the VALIANT ECHO Study). *Am J Cardiol*. 2008;101:607–612.
- Zornoff LA, Skali H, Pfeffer MA, St John SM, Rouleau JL, Lamas GA, Plappert T, Rouleau JR, Moye LA, Lewis SJ, Braunwald E, Solomon SD. Right ventricular dysfunction and risk of heart failure and mortality after myocardial infarction. *J Am Coll Cardiol*. 2002;39:1450–1455.
- Amundsen BH, Helle-Valle T, Edvardsen T, Torp H, Crosby J, Lyseggen E, Stoylen A, Ihlen H, Lima JA, Smiseth OA, Sordahl SA. Noninvasive myocardial strain measurement by speckle tracking echocardiography: validation against sonomicrometry and tagged magnetic resonance imaging. *J Am Coll Cardiol*. 2006;47:789–793.
- Teske AJ, De Boeck BW, Olimulder M, Prakken NH, Doevendans PA, Cramer MJ. Echocardiographic assessment of regional right ventricular function: a head-to-head comparison between 2-dimensional and tissue Doppler-derived strain analysis. *J Am Soc Echocardiogr*. 2008;21:275–283.
- Borges AC, Knebel F, Eddicks S, Panda A, Schattke S, Witt C, Baumann G. Right ventricular function assessed by two-dimensional strain and tissue Doppler echocardiography in patients with pulmonary arterial hypertension and effect of vasodilator therapy. *Am J Cardiol*. 2006;98:530–534.
- Scherptong RW, Mollema SA, Blom NA, Kroft LJ, de RA, Vliegen HW, van der Wall EE, Bax JJ, Holman ER. Right ventricular peak systolic longitudinal strain is a sensitive marker for right ventricular deterioration in adult patients with tetralogy of Fallot. *Int J Cardiovasc Imaging*. 2009;25:669–676.
- Liem SS, van der Hoeven BL, Oemrawsingh PV, Bax JJ, van der Bom JG, Bosch J, Viergever EP, van RC, Padmos I, Sedney MI, van Exel HJ, Verwey HF, Atsma DE, van der Velde ET, Jukema JW, van der Wall EE, Schalij MJ. MISSION!: optimization of acute and chronic care for patients with acute myocardial infarction. *Am Heart J*. 2007;153:14.e1–e11.
- Lang RM, Bierig M, Devereux RB, Flachskampf FA, Foster E, Pellikka PA, Picard MH, Roman MJ, Seward J, Shanewise JS, Solomon SD, Spencer KT, Sutton MS, Stewart WJ. Recommendations for chamber quantification: a report from the American Society of Echocardiography's Guidelines and Standards Committee and the Chamber Quantification Writing Group, developed in conjunction with the European Association of Echocardiography, a branch of the European Society of Cardiology. *J Am Soc Echocardiogr*. 2005;18:1440–1463.
- Zoghbi WA, Enriquez-Sarano M, Foster E, Grayburn PA, Kraft CD, Levine RA, Nihoyannopoulos P, Otto CM, Quinones MA, Rakowski H, Stewart WJ, Waggoner A, Weissman NJ. Recommendations for evaluation of the severity of native valvular regurgitation with two-dimensional and Doppler echocardiography. *J Am Soc Echocardiogr*. 2003;16:777–802.
- Matsunaga A, Duran CM. Progression of tricuspid regurgitation after repaired functional ischemic mitral regurgitation. *Circulation*. 2005;112:1-453-I-457.
- Naqvi TZ, Padmanabhan S, Rafii F, Hyuhn HK, Mirocha J. Comparison of usefulness of left ventricular diastolic versus systolic function as a predictor of outcome following primary percutaneous coronary angioplasty for acute myocardial infarction. *Am J Cardiol*. 2006;97:160–166.
- Lester SJ, Tajik AJ, Nishimura RA, Oh JK, Khandheria BK, Seward JB. Unlocking the mysteries of diastolic function: deciphering the Rosetta Stone 10 years later. *J Am Coll Cardiol*. 2008;51:679–689.
- Ommen SR, Nishimura RA, Appleton CP, Miller FA, Oh JK, Redfield MM, Tajik AJ. Clinical utility of Doppler echocardiography and tissue Doppler imaging in the estimation of left ventricular filling pressures: a comparative simultaneous Doppler-catheterization study. *Circulation*. 2000;102:1788–1794.
- Samad BA, Alam M, Jensen-Urstad K. Prognostic impact of right ventricular involvement as assessed by tricuspid annular motion in patients with acute myocardial infarction. *Am J Cardiol*. 2002;90:778–781.
- Sutherland GR, Di SG, Claus P, D'hooge J, Bijnsens B. Strain and strain rate imaging: a new clinical approach to quantifying regional myocardial function. *J Am Soc Echocardiogr*. 2004;17:788–802.
- Alpert JS, Thygesen K, Antman E, Bassand JP. Myocardial infarction redefined: a consensus document of The Joint European Society of Cardiology/American College of Cardiology Committee for the redefinition of myocardial infarction. *J Am Coll Cardiol*. 2000;36:959–969.
- Teske AJ, Prakken NH, De Boeck BW, Velthuis BK, Martens EP, Doevendans PA, Cramer MJ. Echocardiographic tissue deformation imaging of right ventricular systolic function in endurance athletes. *Eur Heart J*. 2009;30:969–977.
- Prakasa KR, Wang J, Tandri H, Dalal D, Bomma C, Chojnowski R, James C, Tichnell C, Russell S, Judge D, Corretti M, Bluemke D, Calkins H, Abraham TP. Utility of tissue Doppler and strain echocardiography in arrhythmogenic right ventricular dysplasia/cardiomyopathy. *Am J Cardiol*. 2007;100:507–512.
- Giusca S, Dambrauskaitė V, Scheurwegs C, D'hooge J, Claus P, Herbots L, Magro M, Rademakers F, Meyns B, Delcroix M, Voigt JU. Deformation Imaging Describes RV Function Better than Longitudinal Displacement of the Tricuspid Ring (TAPSE). *Heart*. 2010;96:281–288.
- Haddad F, Hunt SA, Rosenthal DN, Murphy DJ. Right ventricular function in cardiovascular disease, I: anatomy, physiology, aging, and functional assessment of the right ventricle. *Circulation*. 2008;117:1436–1448.
- Carlsson M, Ugander M, Heiberg E, Arheden H. The quantitative relationship between longitudinal and radial function in left, right, and total heart pumping in humans. *Am J Physiol Heart Circ Physiol*. 2007;293:H636–H644.
- Haddad F, Doyle R, Murphy DJ, Hunt SA. Right ventricular function in cardiovascular disease, II: pathophysiology, clinical importance, and management of right ventricular failure. *Circulation*. 2008;117:1717–1731.
- Popescu BA, Antonini-Canterin F, Temporelli PL, Giannuzzi P, Bosimini E, Gentile F, Maggioni AP, Tavazzi L, Piazza R, Ascione L, Stoian I, Cervesato E, Popescu AC, Nicolosi GL. Right ventricular functional recovery after acute myocardial infarction: relation with left ventricular function and interventricular septum motion. GISSI-3 echo substudy. *Heart*. 2005;91:484–488.

29. Mehta SR, Eikelboom JW, Natarajan MK, Diaz R, Yi C, Gibbons RJ, Yusuf S. Impact of right ventricular involvement on mortality and morbidity in patients with inferior myocardial infarction. *J Am Coll Cardiol*. 2001;37:37–43.
30. Carlsson M, Ugander M, Heiberg E, Arheden H. The quantitative relationship between longitudinal and radial function in left, right, and total heart pumping in humans. *Am J Physiol Heart Circ Physiol*. 2007;293:H636–H644.

CLINICAL PERSPECTIVE

The prognosis of patients after acute myocardial infarction (AMI) is determined by the interaction of a large number of factors. Besides the importance of clinical parameters, several studies have described the importance of left ventricular function as one of the most important prognostic parameters. On the other hand, data on the association between right ventricular (RV) function and adverse events after AMI are scarce. In the current study, the prognostic value of RV function in 612 consecutive patients admitted with AMI treated with primary percutaneous coronary intervention, who underwent echocardiography within 48 hours of admission, was evaluated. RV function was quantified with RV fractional area change, tricuspid annular plane systolic excursion, and RV strain. During a mean follow-up of 24 months, 86 patients reached the end point defined as a composite of all-cause mortality, reinfarction, and hospitalization for heart failure. RV fractional area change (hazard ratio, 0.96; 95% CI, 0.92 to 0.99) and RV strain (hazard ratio, 1.08; 95% CI, 1.03 to 1.13) were both independent predictors of the composite end point. In addition, RV strain provided incremental value to baseline clinical information, infarct characteristics, left ventricular function, and RV fractional area change for the prediction of the composite end point. In conclusion, RV function provides useful prognostic information in patients treated with primary percutaneous coronary intervention for AMI.